

# Bunting Road



# Bunting Road



# Bunting Road



# Bunting Road



# Jones Road



# Jones Road



# Landscape Plans

- Plans being prepared
- Installation only if budget permits
- Bunting Road less opportunity
- Vegetated swales – some water quality treatment
- Large rocks/some bollards
- Opportunity for some trees

# Old Geelong Road bollards





# Old Geelong Road bollards

Replas recycled plastic bollards



# Old Geelong Road bollards



- Clean out table drains and underground drains
- Asphalt a section near pub
- Bollards purchased
- Permit required to excavate near gas pipeline

# Old Geelong Road widening

- \$50,000 in Capital Works Budget 2015/16
- Widening and kerb & channel – Old Geelong Road to TPI
- Business case required for \$ in future years for works
- Proposal for landscaping – vegetated swale, trees from 1M trees program

# Old Geelong Road bollards





# Brooklyn Community Representative Group meeting – 22 July 2015

## Statewide Waste and Resource Recovery Infrastructure Plan

Karen Wilson, Manager Waste and Resource Recovery Planning

- **Sustainability Victoria**
- **Statewide Waste and Resource Recovery Infrastructure Planning Framework**
- **Statewide Waste and Resource Recovery Infrastructure plan (SWRRIP)**

Brooklyn

- **Metropolitan Waste and Resource Recovery Implementation Plan**

### Our vision

A sustainable and thriving Victoria

### Our purpose

Supporting Victorians to use resources more sustainably and take practical action to respond to climate change.

### Our focus

1. Helping the Victorian community respond to climate change
2. Helping the Victorian community to use energy and materials sustainably
3. Helping the Victorian community to reuse and recover materials
4. Leading planning for an integrated waste and resource recovery system and supporting the responsible management of waste

### Our stakeholders

INDIVIDUALS & HOUSEHOLDS

BUSINESS & INDUSTRY

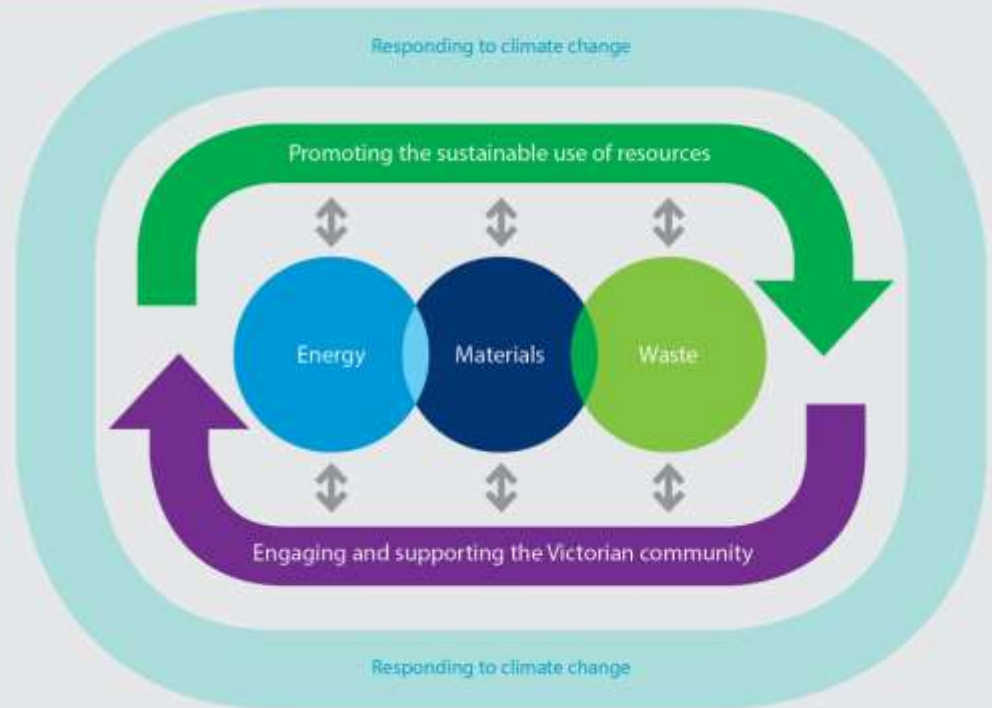
WASTE & RESOURCE RECOVERY GROUPS

LOCAL GOVERNMENT

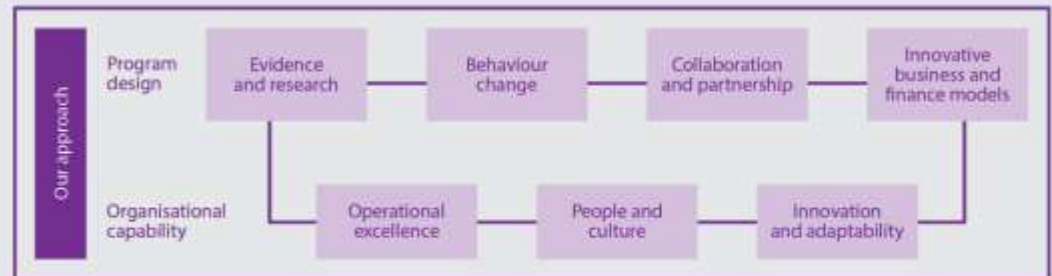
SCHOOLS & EARLY CHILDHOOD

COMMUNITY ORGANISATIONS & NPFS

### Our strategic priorities



### Our approach

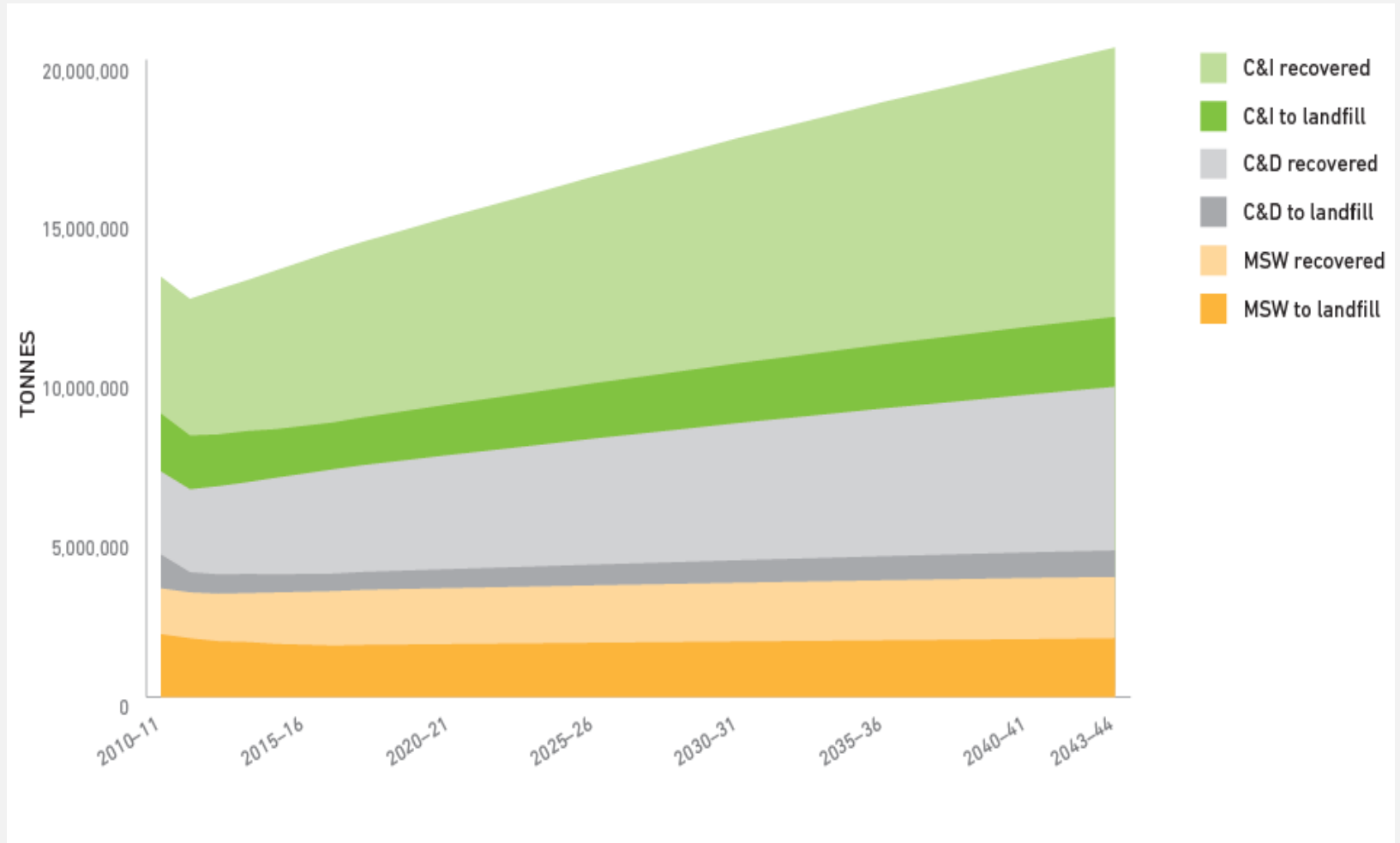


# Statewide Waste and Resource Recovery Infrastructure Planning Framework

- *Environment Protection Act* changes in 2014
- Statewide Plan and 7 Regional Implementation Plans
- Local Government and community involvement
- EPA is regulator



# Projected waste recovered and landfilled, business as usual scenario, from 2010-11 to 2043-44 (tonnes)



# Statewide Waste and Resource Recovery Infrastructure Plan (SWRRIP) – June 2015

- 30 year roadmap to guide future investment in waste management and resource recovery infrastructure in Victoria
- Based on projected volumes and mix of waste
- Minimise long-term environmental and public health impacts
- Support a viable resource recovery industry
- Reduce the amount of valuable material going to landfill



# Hubs and spokes

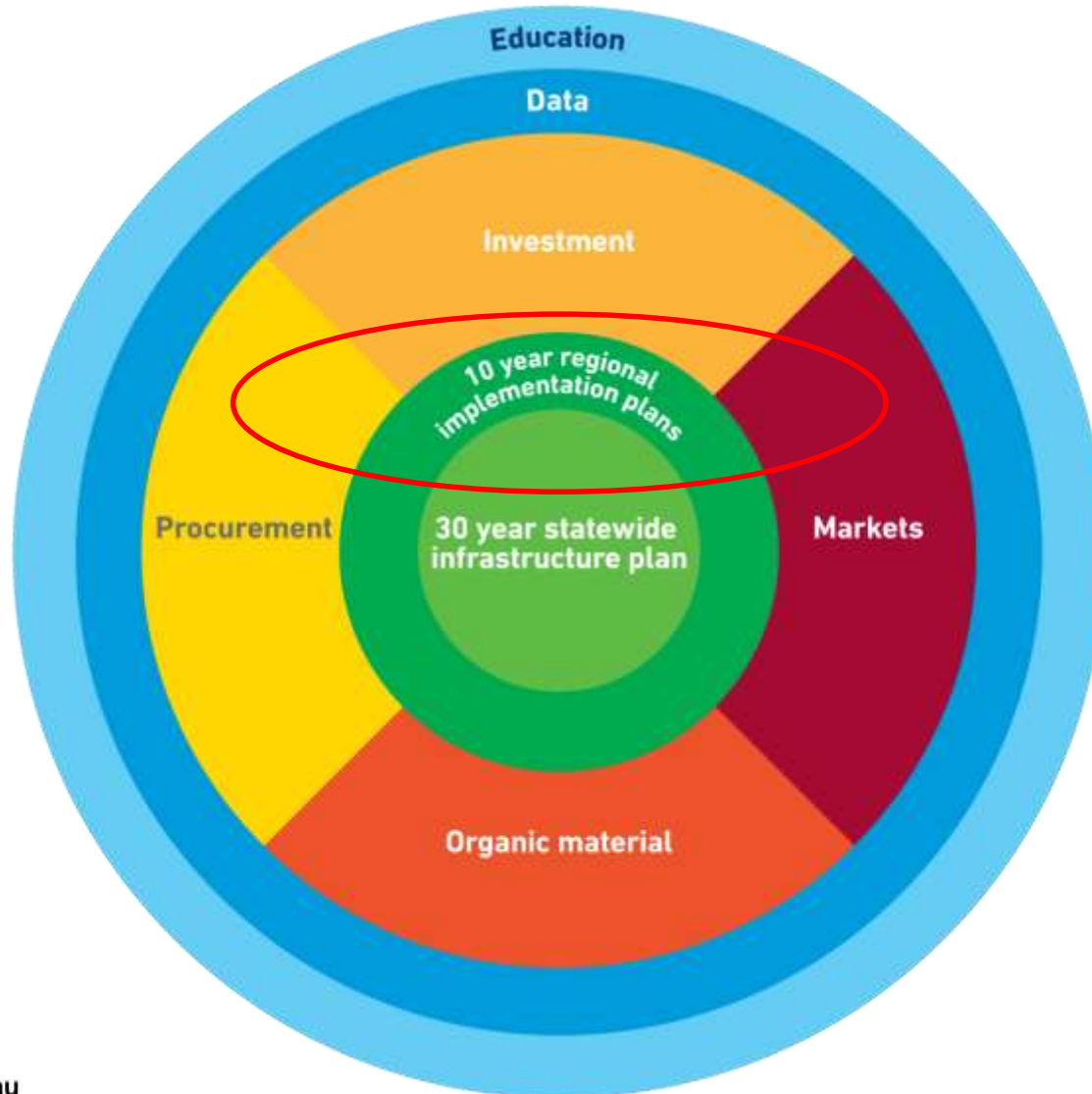
- 23 existing hubs of state importance hubs identified
  - 14 in metropolitan Melbourne
- manage volumes of waste or material streams significant at the state level
- not a definitive list – hubs may be added and removed over time
- initiate discussions required to plan for future activities – doesn't determine their future

Brooklyn Precinct

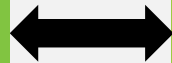
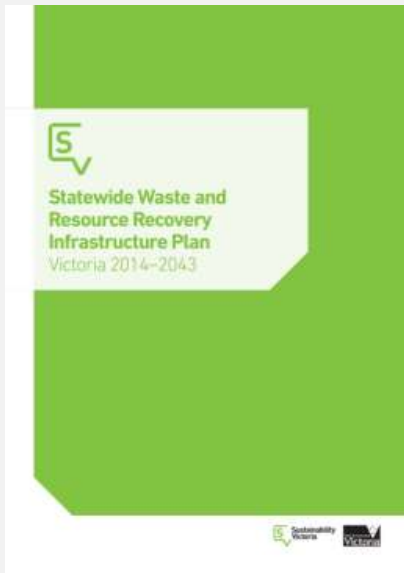
## Brooklyn Precinct

- **Currently very significant for processing**
  - metals (40% of state's metals)
  - construction and demolition materials recovered (1 million tonnes annually)
- **Potential for parts of the precinct to be used for resource recovery facilities?**
  - Best practice operations
  - Community and local government support
  - Meet planning and EPA approvals
  - Adequate buffers

# Implementation



# Regional Waste & Resource Recovery Implementation Plans (RWRRIPs)



7 regional Waste and Resource Recovery Implementation Plans

- 10 year outlook to meet the waste and resource recovery infrastructure needs of the region
- Local and regional needs and solutions - ensure strategic directions addressed at the local level
- Consistent structure and content to ensure integrated plans and statewide system



# Metropolitan Waste and Resource Recovery Implementation Plan

A plan that sets out how the waste and resource recovery infrastructure needs of Melbourne will be met over at least a 10 year period

Includes:

- how we will manage the growing tonnages of waste produced in Melbourne
- an **infrastructure schedule** that lists existing and future waste and resource recovery facilities required to meet Melbourne's waste management needs

(the schedule will include landfills that are currently operating)

# Stakeholder and community engagement activities

- Stakeholder and community engagement is an important component to implementation plan development
- The engagement approach aims to be proactive and transparent, using a series of engagement methods to:
  - create awareness and understanding
  - provide multiple opportunities to listen, develop and strengthen relationships
  - facilitate a meaningful exchange of information with stakeholders and community members



# Upcoming engagement opportunities

- **Special BCRG workshop?**
- Community Leader's Forum and ongoing community reference group discussions
- **Online engagement**, visit [www.participate.mwrrg.vic.gov.au/conversation](http://www.participate.mwrrg.vic.gov.au/conversation)

## The Containerspace Story



## What We Do

- Containerspace is a shipping container yard in Somerville Rd, Brooklyn
- On approx. 10 acres
- Opened for 12 months
- Family owned small business with 11 employees & contractors
- We store, repair, inspect, pre-trip & wash shipping containers owned by various shipping lines

## Background Information

- Container Logistics (previous company) was issued with a PAN Notice in July 2012
- Tried various methods of dust suppression
- Requirement to seal site could not be met
- Relocation only option
- Container Logistics closure
- Myself, husband & one previous owner of Container Logistics purchased land for development. New company formed.

New site purchased June 2013. Site sealed but had a number of environmental issues.



**11 buildings in total**



**Holes everywhere**



**Drainage Problems**





## PRE-DEVELOPMENT

- Massive Site Clean Up
- Remediation works
- Decommissioning of gas line
- Researched Brooklyn Industrial Precinct Strategy
- Consultation with Brimbank Council
- Spoke to neighbouring businesses
- Visited Vic Roads
- Permits lodged & approved



**Extensive Asbestos Removal**



**Demolition**



**Site cleared & ready to begin**



**Massive Concreting Works**



## SUSTAINABLE FUTURE

Containerspace have made a strong commitment towards change in our industry. Sustainability has been incorporated into our site design, maximising passive solar, minimising energy use, harvesting rain water and using recycled products wherever possible. We claim to be one of the first clean & green Container Parks in Victoria.



Our new office has included shipping containers in design, incorporating many sustainable features

- ✓ Recycling over 70,000 bricks from original site
- ✓ Installing high ceilings, foyer air lock, triple rated insulation & double glazed windows to improve heating/cooling retention
- ✓ Tank water connected to all toilets in both office & workshop
- ✓ Installed filters to drinking water taps eliminating use of bought water & use of paper cups
- ✓ Jet hand dryers – eliminating paper waste & no mess
- ✓ LED lighting
- ✓ Installing latest CBS system – switching off all unnecessary electrical appliances at close of business with remote access



Site fully sealed



Installing filters on stormwater drains to eliminate contaminants from entering our waterways



We sweep traffic areas on a weekly basis to minimise any potential dust issues



## OTHER FEATURES

- ✓ Broadband beepers fitted to forklifts
- ✓ Designated truck lanes with car traffic separated
- ✓ 40 metre wide entrance (road queuing minimised)
- ✓ New front fence
- ✓ Automated sensor activated gate entry
- ✓ Landscaping, including veggie patch & fruit trees
- ✓ All Containerspace staff are First Aid Qualified
- ✓ Own the latest model Powerheart G5 defibrillator

We recycle wherever possible reducing our wastage by more than 50%.



These landscape tanks retain water underneath & serve as a garden bed on top. The pavers were recycled from original CMI building.



## WE ALSO

- ✓ Purchase eco friendly cleaning products
- ✓ Compost green waste or place in our worm farm
- ✓ Promote paperless transactions whenever possible. Staff are urged to save soft copies rather than print
- ✓ Purchase energy efficient appliances
- ✓ Purchase 100% recyclable paper
- ✓ Source local suppliers & contractors where possible



Yes we've come a long way but there's still more to do. Future planned works include:

- ✓ Concrete patch-ups
- ✓ More landscaping
- ✓ Rear courtyard for staff
- ✓ Additional tanks for container wash area increasing our water storage capacity
- ✓ Solar energy



Our vision was to create an attractive workplace for people to both work & visit. We believe we have created a very unique business & are very proud of what has been achieved thus far. Feedback to date has been extremely positive nonetheless our commitment is ongoing and we are always striving for ways to improve.

*Helen Paterson*

465 Somerville Rd, Brooklyn, 3012

[www.container-space.com.au](http://www.container-space.com.au)





# Brooklyn Community Representative Group Information Update

---

ENVIRONMENT PROTECTION AUTHORITY



# Key Updates

---

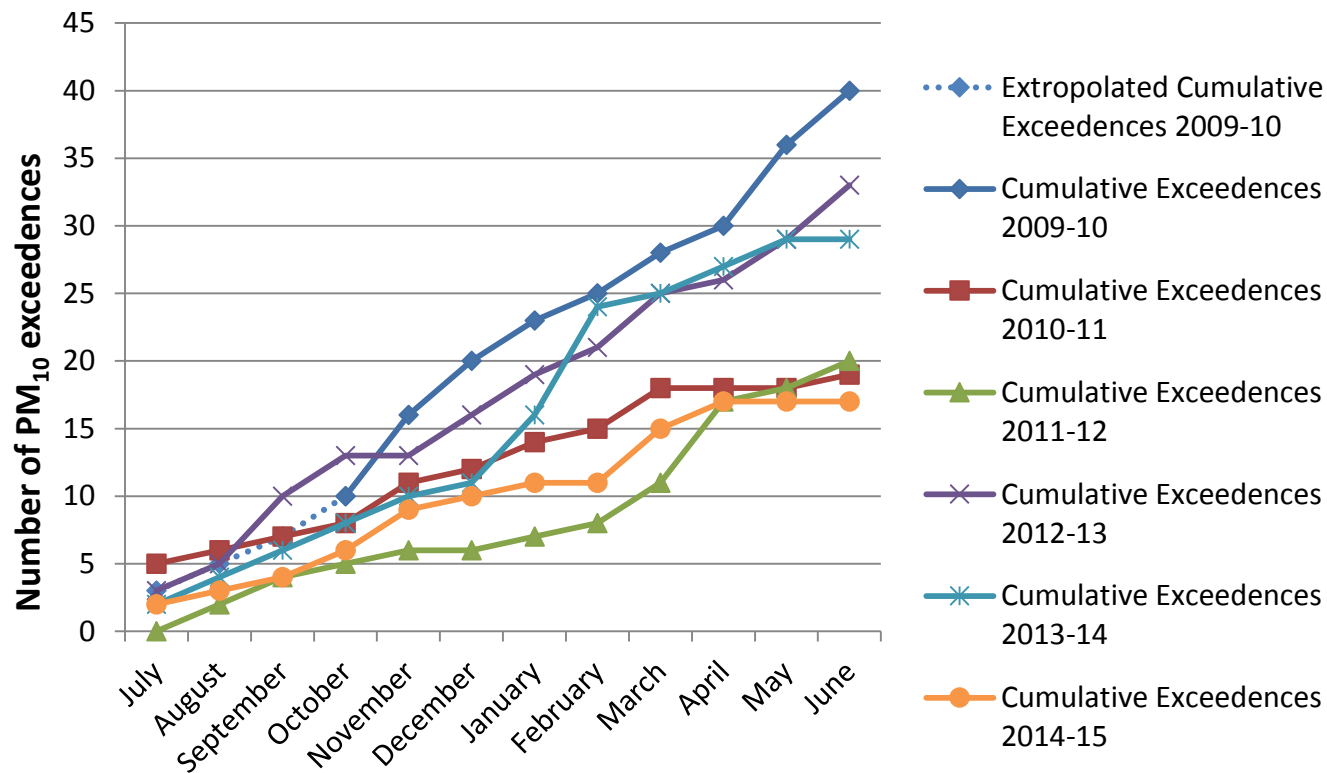
- Seventeen exceedences in 2014- 15 (lowest level since monitoring began in 2009)
- Driest year since monitoring began
- 166 odour complaints in 2014-15 (second lowest since electronic recording began in 1996)
- Construction of Jones and Bunting Roads underway
- Metro is recruiting an additional field team



100 Days exceedence free!



# Poor Air Quality Days 2009 - 2015



\* Note air quality objective is no more than five PM<sub>10</sub> exceedences per year

# Rainfall to Exceedance Conversion Rate 2009 - 2015

---

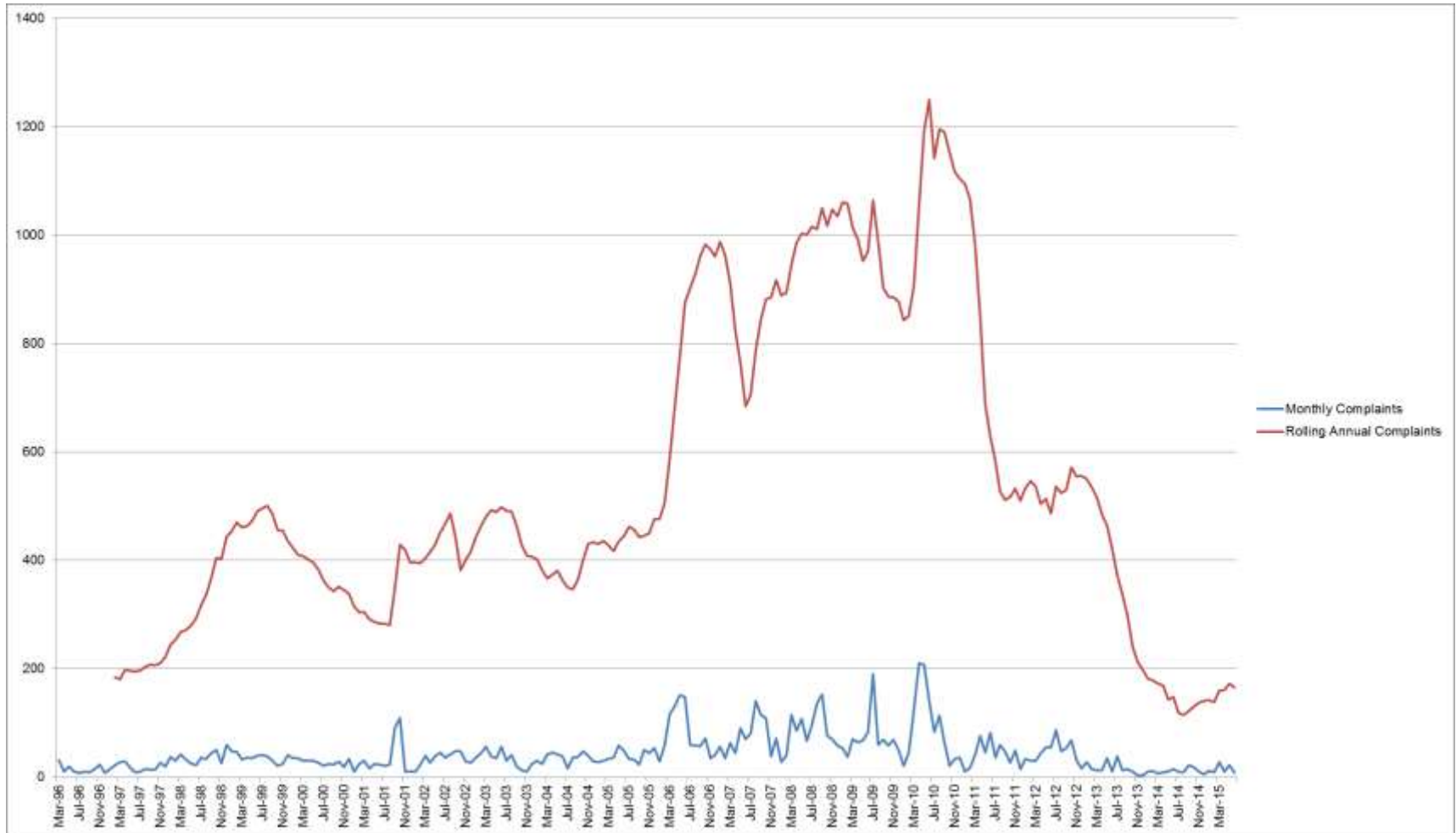
Financial Year	Rainfall (mm)	Exceedences	Conversion Rate (%)
09-10	(NA)	40	52
10-11	850	19	24
11-12	611	20	21
12-13	387	33	37
13-14	459	29	29
14-15	383	17	19

# Air Quality Statistics

<b>Air monitoring statistics for Brooklyn Industrial Precinct</b>	<b>May-Jun 2015</b>	<b>Jan- June 2015</b>
Number of days exceeding the PM10 air quality objective	0	7
Number of weekdays with consistent northerly winds and no recent rain	10	17
Number of hours of poor air quality	25	109
% of poor air quality occurring between 7-11am	72%	62%
% of poor air quality occurring during northerly winds	88%	80%
Number of poor air quality alerts issued for Brooklyn	2	11
Number of days exceeding the PM10 air quality objective	0	7



# Odour Reports 1996- 2015



# More work to be done

---

- **Sealed forecourts** and **wheel cleaning** at entrances to sites on **Jones and Bunting Roads**.
- Targeted **enforcement** against companies that continue to **track mud** onto **Somerville Road**.
- Continue to **monitor compliance** of sites across the precinct and where non compliance is detected EPA will initiate **enforcement actions**.

# Questions

---

## Contact us

EPA Victoria welcomes your comments, queries and feedback.



1300 EPA VIC (1300 372 842)



[contact@epa.vic.gov.au](mailto:contact@epa.vic.gov.au)