



Brooklyn Community Representative Group meeting – 22 July 2015

Statewide Waste and Resource Recovery Infrastructure Plan

Karen Wilson, Manager Waste and Resource Recovery Planning

- **Sustainability Victoria**
- **Statewide Waste and Resource Recovery Infrastructure Planning Framework**
- **Statewide Waste and Resource Recovery Infrastructure plan (SWRRIP)**

Brooklyn

- **Metropolitan Waste and Resource Recovery Implementation Plan**

Our vision

A sustainable and thriving Victoria

Our purpose

Supporting Victorians to use resources more sustainably and take practical action to respond to climate change.

Our focus

1. Helping the Victorian community respond to climate change
2. Helping the Victorian community to use energy and materials sustainably
3. Helping the Victorian community to reuse and recover materials
4. Leading planning for an integrated waste and resource recovery system and supporting the responsible management of waste

Our stakeholders

INDIVIDUALS & HOUSEHOLDS

BUSINESS & INDUSTRY

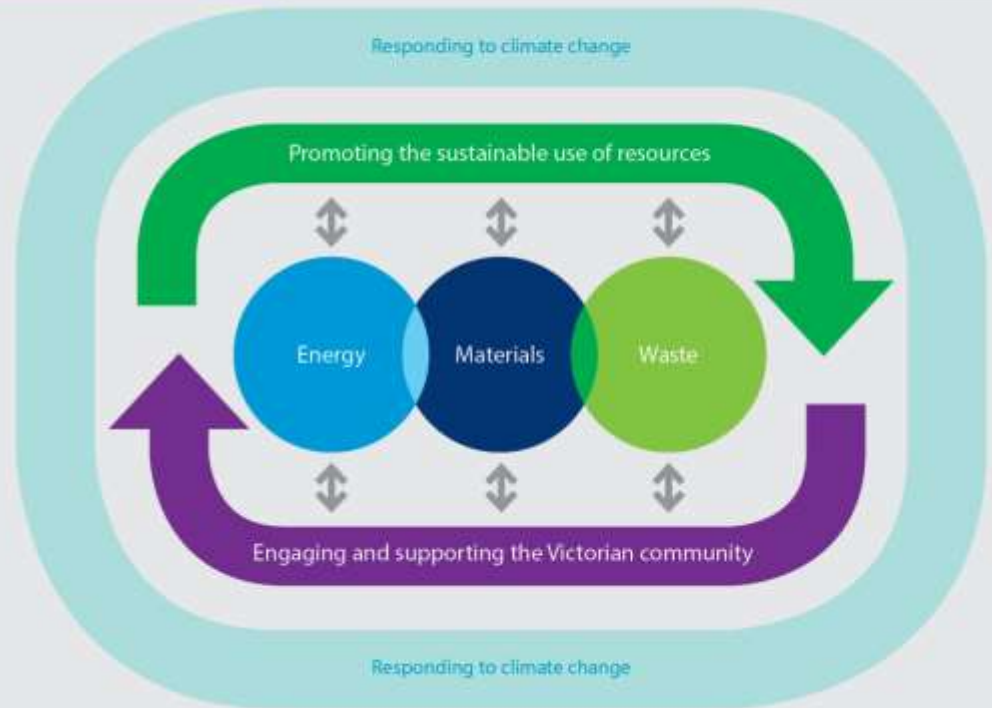
WASTE & RESOURCE RECOVERY GROUPS

LOCAL GOVERNMENT

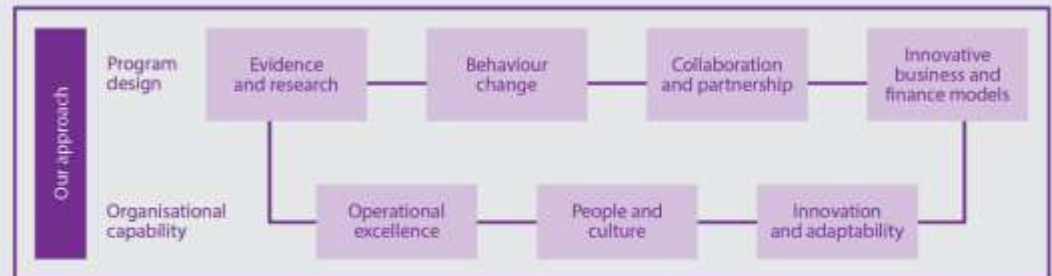
SCHOOLS & EARLY CHILDHOOD

COMMUNITY ORGANISATIONS & NFPs

Our strategic priorities



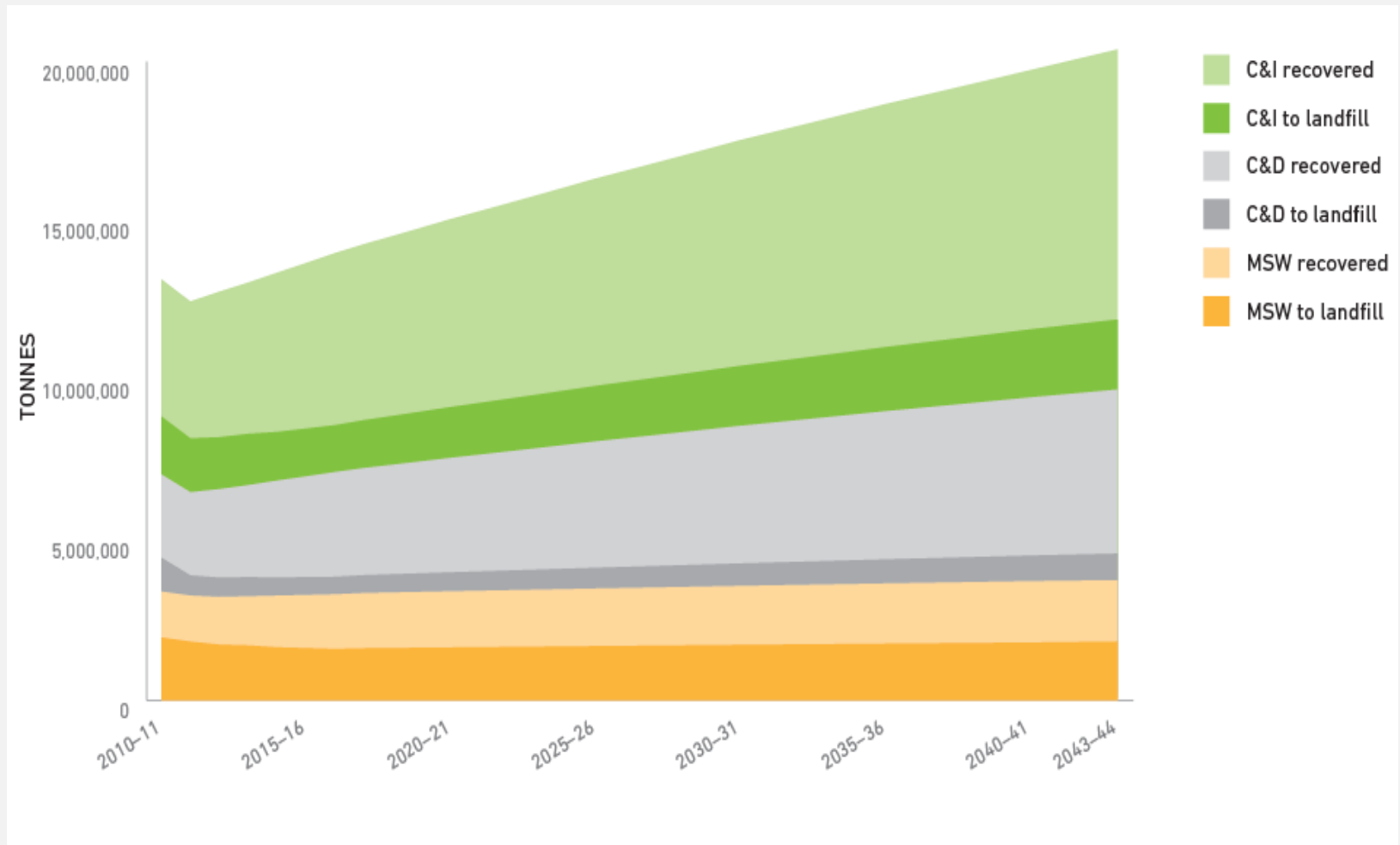
Our approach



Statewide Waste and Resource Recovery Infrastructure Planning Framework

- *Environment Protection Act* changes in 2014
- Statewide Plan and 7 Regional Implementation Plans
- Local Government and community involvement
- EPA is regulator

Projected waste recovered and landfilled, business as usual scenario, from 2010-11 to 2043-44 (tonnes)



Statewide Waste and Resource Recovery Infrastructure Plan (SWRRIP) – June 2015

- 30 year roadmap to guide future investment in waste management and resource recovery infrastructure in Victoria
- Based on projected volumes and mix of waste
- Minimise long-term environmental and public health impacts
- Support a viable resource recovery industry
- Reduce the amount of valuable material going to landfill



Hubs and spokes

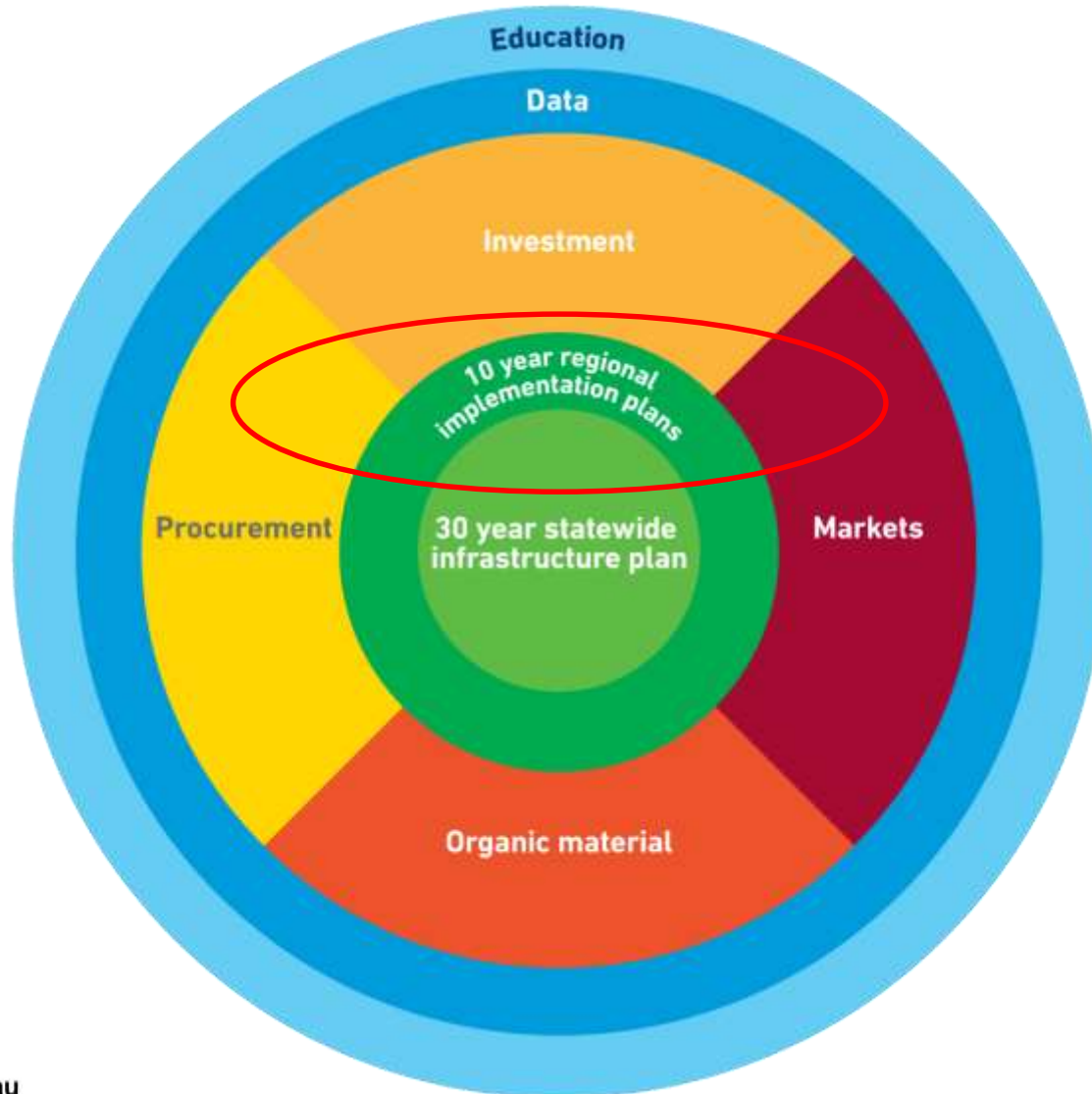
- 23 existing hubs of state importance hubs identified
 - 14 in metropolitan Melbourne
- manage volumes of waste or material streams significant at the state level
- not a definitive list – hubs may be added and removed over time
- initiate discussions required to plan for future activities – doesn't determine their future

Brooklyn Precinct

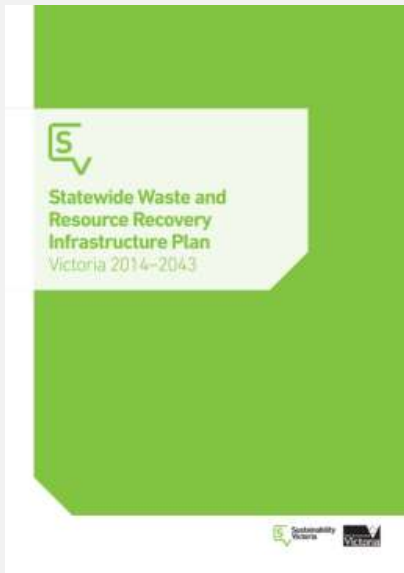
Brooklyn Precinct

- **Currently very significant for processing**
 - metals (40% of state's metals)
 - construction and demolition materials recovered (1 million tonnes annually)
- **Potential for parts of the precinct to be used for resource recovery facilities?**
 - Best practice operations
 - Community and local government support
 - Meet planning and EPA approvals
 - Adequate buffers

Implementation



Regional Waste & Resource Recovery Implementation Plans (RWRRIPs)



7 regional Waste and Resource Recovery Implementation Plans

- 10 year outlook to meet the waste and resource recovery infrastructure needs of the region
- Local and regional needs and solutions - ensure strategic directions addressed at the local level
- Consistent structure and content to ensure integrated plans and statewide system



Metropolitan Waste and Resource Recovery Implementation Plan

A plan that sets out how the waste and resource recovery infrastructure needs of Melbourne will be met over at least a 10 year period

Includes:

- how we will manage the growing tonnages of waste produced in Melbourne
- an **infrastructure schedule** that lists existing and future waste and resource recovery facilities required to meet Melbourne's waste management needs

(the schedule will include landfills that are currently operating)

Stakeholder and community engagement activities

- Stakeholder and community engagement is an important component to implementation plan development
- The engagement approach aims to be proactive and transparent, using a series of engagement methods to:
 - create awareness and understanding
 - provide multiple opportunities to listen, develop and strengthen relationships
 - facilitate a meaningful exchange of information with stakeholders and community members

Upcoming engagement opportunities

- **Special BCRG workshop?**
- Community Leader's Forum and ongoing community reference group discussions
- **Online engagement**, visit www.participate.mwrrg.vic.gov.au/conversation

