



FUTURE DIRECTIONS

With the disastrous result from VCAT re the non sealing of Jones Road, in the interests of the health and safety of residents of Brooklyn and the workers in the Brooklyn Industrial Estate, BRAG request that the following recommendations be immediately implemented to green Stage 1.

Goal:

To create a green & clean belt north of Geelong Road bounded by Federation Trail & east side Jones Road, Market Road, Geelong Road and Kororoit Creek.



1. Close Jones Road

Brimbank City Council to close Jones Road 50 metres north of Federation Trail to all traffic until such time the East West Link development is implemented diverting all existing industrial traffic along Bunting Road to McDonald Road.



2. Old Geelong Road completed

Brimbank City Council to develop Old Geelong Road and part of Jones Road to completely seal and finish curb and channel and drainage works and work with the local businesses to implement landscaping in the verges.



















3. Geelong Road Issues

Hobsons Bay Council to place bollards along both sides of the service Road between Burgess Street and Grieve Parade and work with the local businesses to implement landscaping in the verges.



Parking in Geelong Road destroying nature strip



Parking in Geelong Road destroying nature strip



Result of parking on median strip between service Road & Geelong Road!

4. Land ownership issues resolved

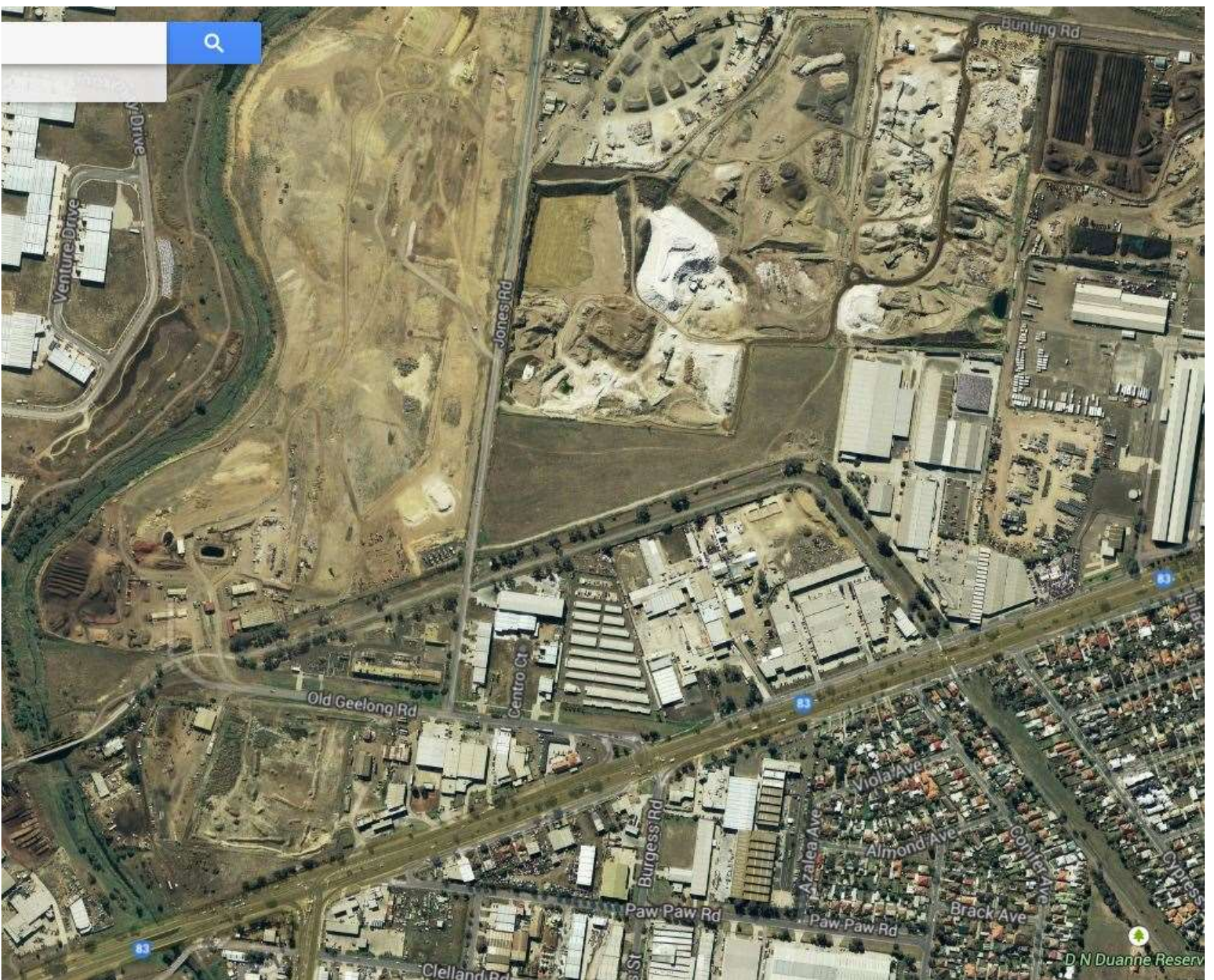
Brimbank City Council, VicRoads and DEPI to resolve land ownership issues with respect to Old Geelong Road easement, Federation Trail Easement and Crown land in front of One Steel.

Concept plan Federation Trail



5. Dust in Brooklyn Industrial Precinct

EPA Victoria to continue to monitor and prosecute all incidents of licence failure and to require all industries to install dust monitors along their boundaries, closing down any industry that fails to meet its planning permit requirements regarding dust outside their boundaries.



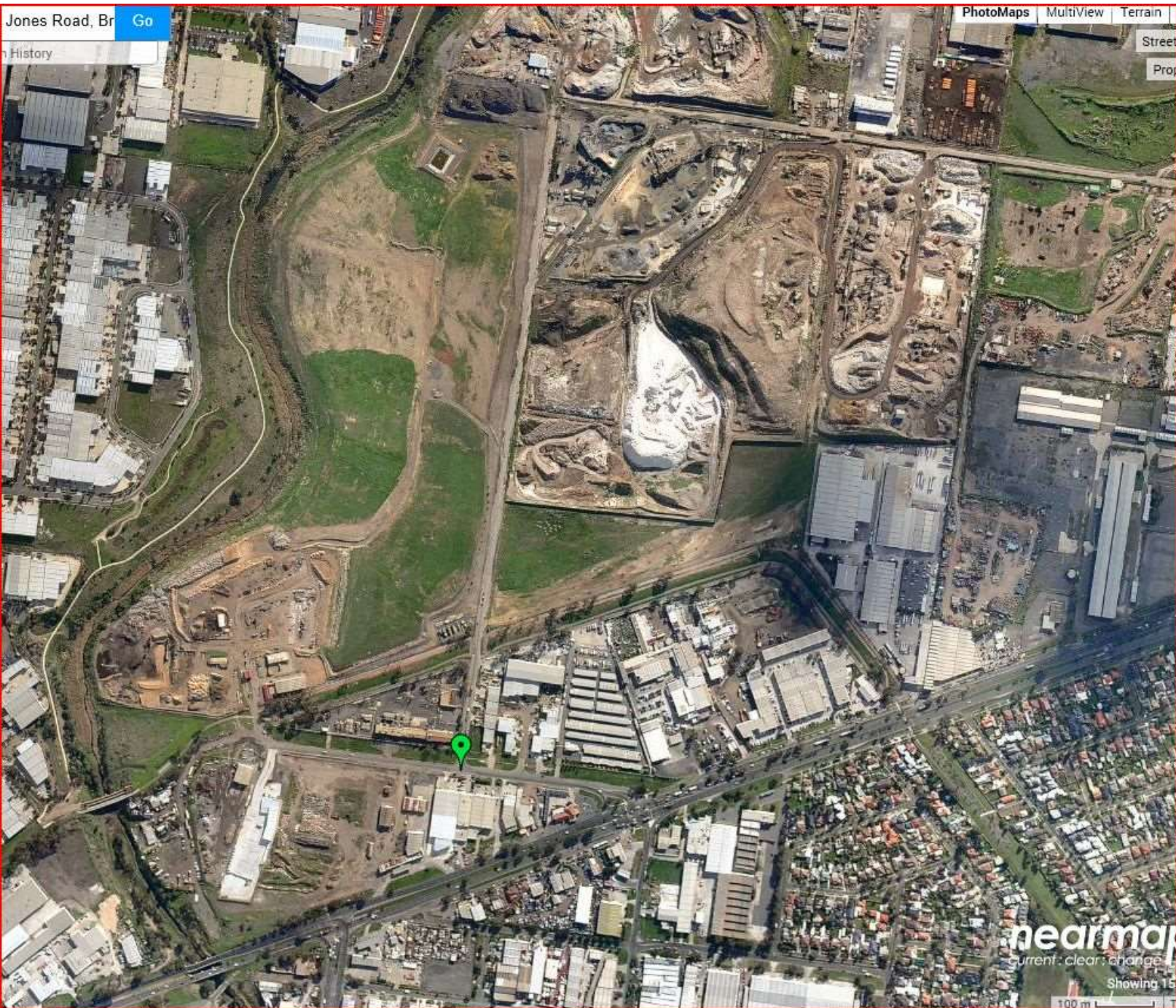
Jones Road, Br [Go](#)

History

[PhotoMaps](#) [MultiView](#) [Terrain](#)

[Street](#)

[Prop](#)



nearmap

current: clear: change

Showing 15

100 m