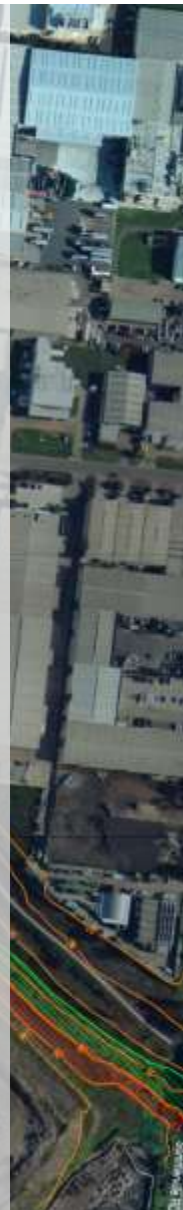




**CLEANAWAY**  
A Transpacific Company

# Old Geelong Road Landfill

> November 2013 Landscape  
Update



# Four Stages of Landscaping



Prepared by Land Air Pty Ltd

Recover Recycle Reuse

# Kororoit Ck - Embankment Landscape Areas



Prepared by Land Air Pty Ltd

Recover Recycle Reuse

# Stage 1 Seeding

---



Recover Recycle Reuse

# Stage 2 Area

---



Recover Recycle Reuse



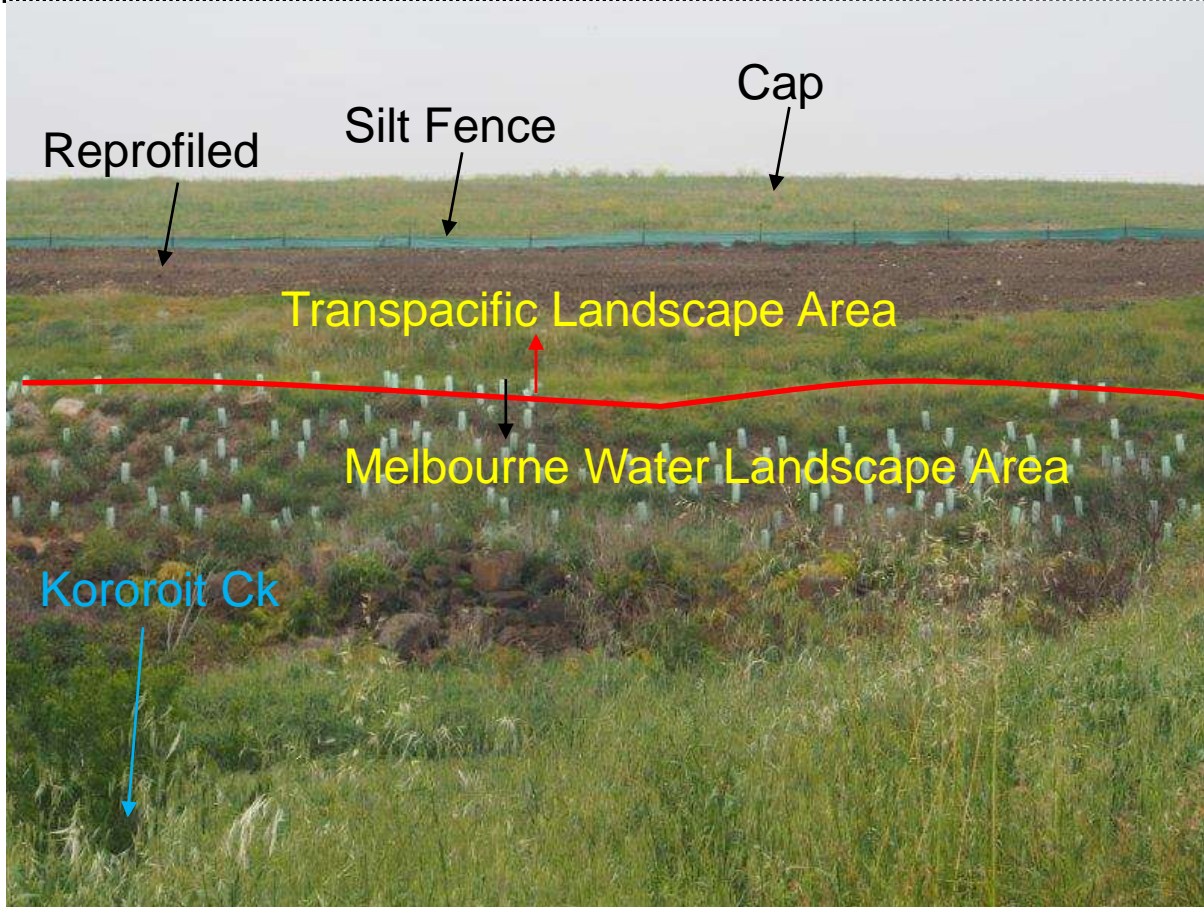
# Stage 3 Area

---

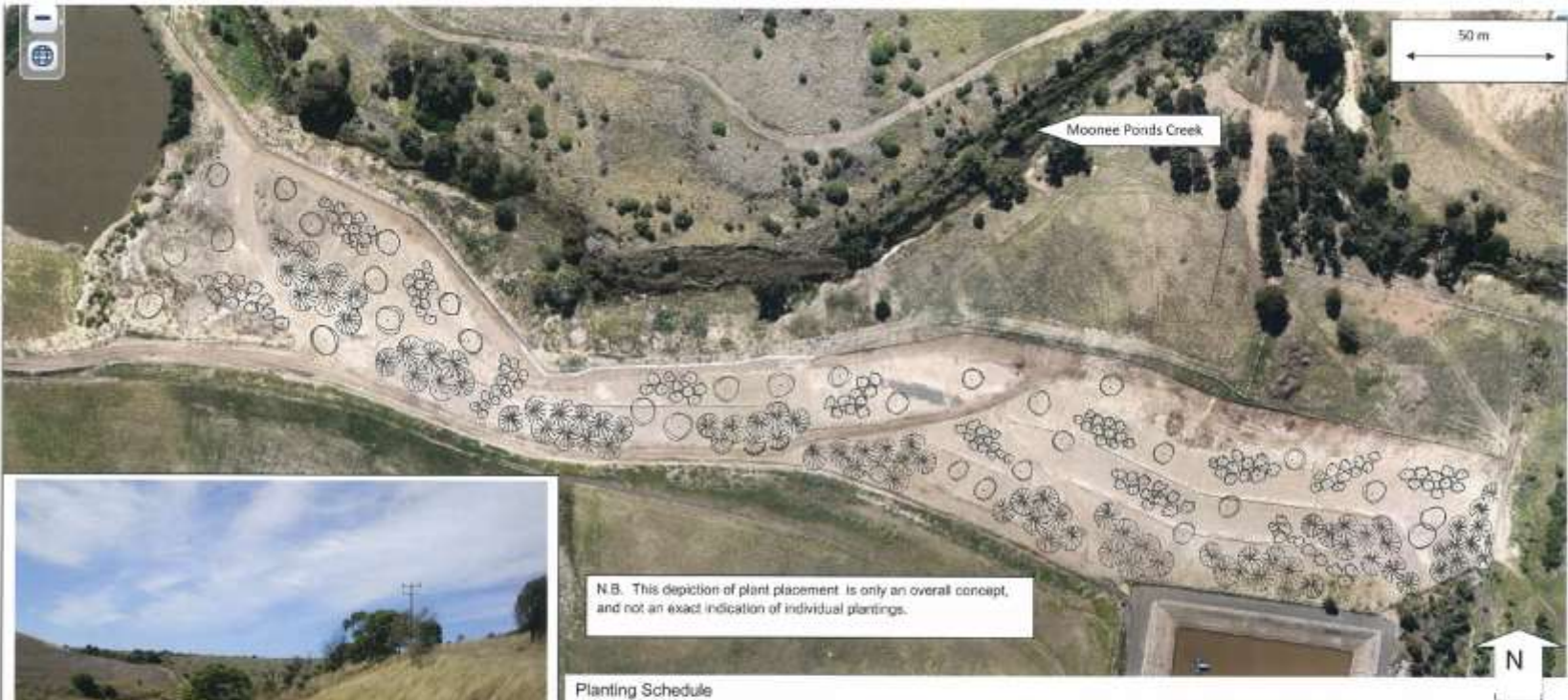


Recover Recycle Reuse

# Embankment Landscaping



Recover Recycle Reuse



Typical North facing escarpment. Emu Creek, Wilwood.  
This site is managed by Huma Bush Crew.  
Establishment time is 8-10 years for a similar effect. Site is covered in native grass species which will be as those to be used in direct seeding by Flora Victoria.

Planting Schedule

No.	Common Name	Botanical Name	Spacing	Comments
150	She Oaks	<i>Allocasuarina verticillata</i>	3m	Plant in groups of 15-20. To be located in top half of escarpment
150	Lightwood Wattle	<i>Acacia implexa</i>	3m	Plant in groups of 10-15 plants.
100	Hop Bush	<i>Dodonaea viscosa</i>		Scatter across slope
150	Hedge Wattle	<i>Acacia paradoxa</i>	2m	Plant in small groups of 10-15
150	Saltbush	<i>Rhagodia parabolica</i>		Scatter throughout site
100	Grey Box	<i>Eucalyptus microcarpa</i>		Scatter throughout site
100	Drooping Cassinia	<i>Cassinia arcuata</i>	2m	Plant in groups of 10-15
100	Black Wattle	<i>Acacia mearnsii</i>		Scatter throughout site

Total 1000 tubestock

Prepared by Ian Taylor, Western Plains Flora Pty. Ltd.

April 2012



# North Wall Landscaping

---



Recover Recycle Reuse

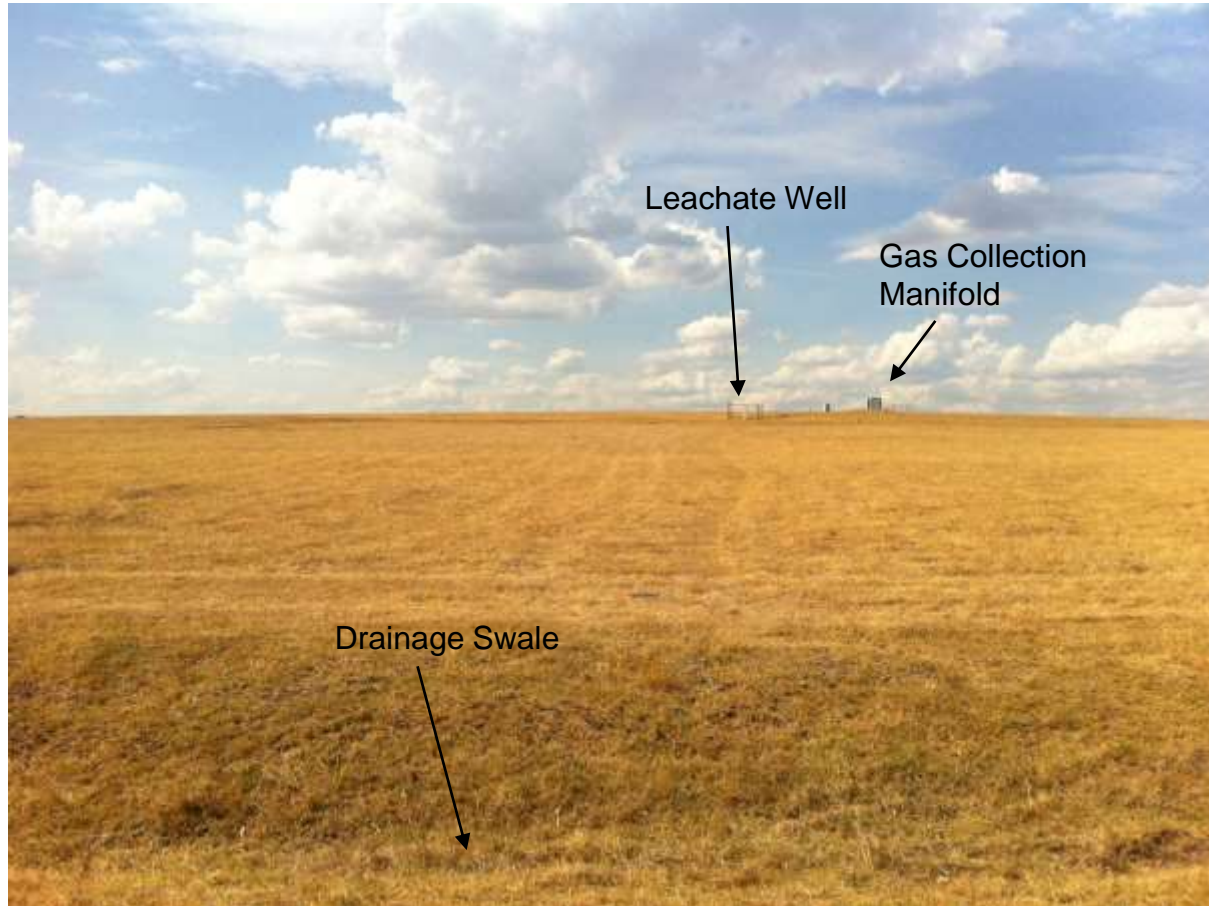


# Rock Pond



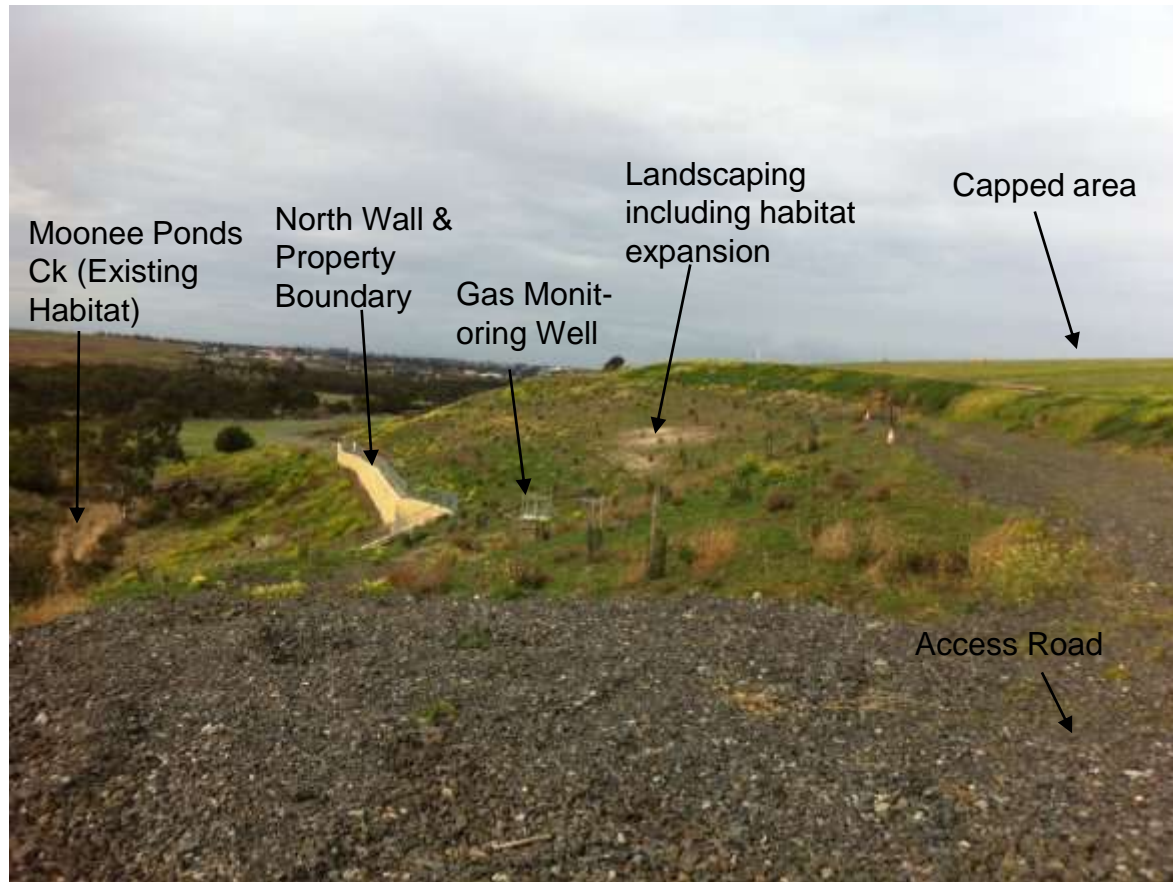
Recover Recycle Reuse

# Mound 1



Recover Recycle Reuse

# North Wall and Embankment



Recover Recycle Reuse

# Kangaroos on Mound 3

---



Recover Recycle Reuse

# Irrigation System – Sprinkler Uses Stormwater Stored in Ponds

---



Recover Recycle Reuse

Thank you  
for your time

