

## BCRG COMMUNITY FORUM 4/2011, Meeting Notes

Date: 24 November, 2011

Time: 6:00 for 6:30 – 9:15 pm

Where: Brooklyn Community Centre, Cypress Avenue Brooklyn

### AGENDA

#### Meeting Purpose:

- To provide an update on progress towards resolution of dust, noise and odour issues

Convenor: Jen Lilburn

6:00	<b>Light Refreshments</b>
6:30	<b>1. Welcome</b> Apologies Confirm draft meeting notes – 18 August, 2011 Confirm meeting purpose and agenda
6:40	<b>2. Bruce Light, Yarraville On the Nose</b> West Yarraville Accelerated Street Tree Avenue Development
6.50	<b>3. Bert Boere, Brooklyn Residents Action Group</b> Group update
7:00	<b>4. Geoff Mitchelmore, Friends of Lower Kororoit Creek</b> Federation Trail Project
7:10	<b>Questions</b>
7.15	<b>5. Susan Fitton, Brooklyn Industrial Precinct Strategy Committee</b> <ul style="list-style-type: none"> <li>• Update from the Committee, future developments and planning.</li> <li>• What is the capacity to effect change now in order to shape the future of BIP?</li> </ul>
7:45	<b>Break</b>
8:00	<b>6. Alex Kozeniauskas , Project Engineering Manager, Delta Demolitions</b> No questions at this time
8:10	<b>7. Alan Bloomfield, Manager Recycling, City Circle Demolition &amp; Recycling</b> No questions at this time
8:20	<b>8. Malcolm Ramsay, Hobson's Bay CC – Francis St/Cemetery Rd Update</b>
8:25	<b>9. EPA Victoria - Update on dust, noise and odour program</b> <b>Richard Marks, Manager Pollution Response</b> <ul style="list-style-type: none"> <li>• Bunting/Jones Road review</li> <li>• EPA outcomes research</li> <li>• Inspiring Environmental Solutions project</li> </ul>
8:55	<b>10. Panel Discussion and Questions</b> <ul style="list-style-type: none"> <li>• EPA - Richard Marks</li> <li>• Brimbank CC - Carey Patterson</li> <li>• Maribyrnong CC – Foti Beratis</li> <li>• Hobsons Bay CC – Malcolm Ramsay</li> <li>• Delta Demolitions – Alex Kozeniauskas</li> <li>• City Circle Demolitions – Alan Bloomfield</li> </ul>
9:25	<b>Close</b>

Please note that the notes from this meeting will be posted on EPA Victoria's website and the Brooklyn Industrial Precinct website and will be available to the general public. Meeting participants should advise Andrea Mason or Jen Lilburn if they would like their name removed from this public document.

### **Item 1. Welcome, Jen Lilburn, Convenor**

Jen introduced herself as the independent Convenor of the forum, welcomed everyone to this fourth forum of the year and reminded everyone of the purpose of the forum. Jen extended a warm welcome to all participants including Wade Noonan MP, Meredith Sussex and the representatives of the residents groups present and noted that it was an important part of the agenda to hear from these groups. Several apologies were noted, particularly, Mayor Michael Raffoul and Cr Tony Briffa (Hobsons Bay CC)

**Action 1:** Andrea is going to compile a summary of completed actions from the rolling actions list for the year to remind us that we are making a difference in the area.

The draft meeting notes from the previous meeting on the 18th August, 2011 were then confirmed as accurate.

Jen congratulated Andrea Mason on her entry to the Victorian Landcare Honour Roll, and noted that many of the people associated with the forum do tremendous amounts of work for their local community as volunteers and that it is important that their contributions are acknowledged.

### **Item 2. Bruce Light, Yarraville On The Nose (OTN)**

Bruce explained that On The Nose (OTN) was formed over 6 years ago and that through the BCRG forum and with the assistance of the EPA and the community his members felt that the West Yarraville area has been successfully rid of odours. Thanks were extended to Cargill and the EPA who have worked together to address odour issues; mention was also made of the relocation of SITA from the area. OTN will still assist the Brooklyn Residents Action Group in their work to get the same results for Brooklyn residents.

OTN acknowledged the \$50,000 received from Cargill through EPA's Inspiring Environmental Solutions initiative. With assistance from the Maribyrnong City Council 300 large trees will be planted in the streets in Yarraville to significantly improve the streetscape. Council is matching this dollar for dollar for ongoing maintenance. City West Water is investigating ways to provide recycled water for the trees, and is donating buckets so the community can water the trees, hence becoming involved in the project.

The group is hoping to find a partner to monitor the project through thermal imaging over the next 5 years and to undertake aerial photos to measure growth through an increase in canopy cover. Bruce thanked BCRG for the opportunity to work closely with industry, the EPA, Brimbank City Council, Hobsons Bay City Council and the Maribyrnong CC – all of whom are essential to OTN projects.

### **Item 3. Bert Boere, Brooklyn Residents Action Group (BRAG)**

Bert noted that BRAG, OTN and Friends of Lower Kororoit Creek are working together on a number of issues in the area.

Other activities of the group include:

- a meeting with VicRoads and Jen Lilburn regarding Francis St
- involvement with the development of a link between Cypress Ave to the other side of the Federation Trail, including a 4m wide treed walkway easement
- A membership drive and promotion for the Federation Trail Project with 2 newsletter drops over the last 6 months
- \$350,000 has been spent on Brooklyn Park. There is a draft HBCC master plan for the park outlining future landscaping. Pathways to be constructed first. Further works to take place depending upon finances
- Federation Trail Project

- City West Water have discussed with the group a pilot study around a potential resources recovery waste facility
- For 2012 the BRAG general meetings are to be on the 4<sup>th</sup> Wednesday of each month at the Brooklyn Community Hall commencing at 7pm.

**Item 4. Geoff Mitchelmore, Brooklyn Federation Trail Project**

**Background**

Geoff gave a presentation on the Brooklyn Federation Trail Project, which is supported by the Victorian Government, EPA Victoria – Inspiring Environmental Solutions and the Magistrates Court. The project received \$50,000 from a penalty payment from Swift Australia Pty Ltd.

Previously the trail was only mowed every 3 months and not well managed. Hobsons Bay City Council is now undertaking the management including the mowing. Issues still include:

- manholes and large pits which need to be fenced
- water issues in the playground adjacent to the trail which HBCC is assessing
- open drains and dumping of rubbish.

**Federation Trail** – including Duane Reserve Soccer Club Bldg and playground prior to any works



Fig 1 Slides 3 – 11 Federation Trail

## Duane Reserve – Concept Plan and works undertaken

HBCC now has a Concept plan for the D.N. Duane Reserve which is adjacent to the trail. This includes the work that has been undertaken to clean up the area, improve the car park, improve and grass the playground, install new signage and improve the entry so that it is more welcoming. The majority of these works have now been completed by HBCC.



Fig 3 Slide 16 D.N. Duane Reserve Concept Plan



## Federation Trail – Future plan

Under the HBCC prepared BRAG Federation Trail Project - Revegetation Concept Plan the BRAG Federation Trail Project is now ready to be undertaken:

- Planting beds are to be ripped - Nov 2011
- Mulching is planned for Dec 2011
- 10,000 plants are to be planted, mostly by contractors, in June 2012
- Conservation Volunteers Australia and the community will also help with planting.
- **A community planting day and celebration is planned for 12<sup>th</sup> June 2012. Activities include planting, entertainment, face painting, giveaways and a free BBQ. All Welcome.**

### Federation Trail – Works undertaken so far

- Federation Trail Millers Rd entrance works.  
New fence, garden bed works by HBCC with BRAG/EPA IES funding.
- Commencement of preparation of future trail garden beds for ripping and mulching Nov/Dec 2011.



Fig 5 Slides 21 – 25 Federation Trail Project planting sites

### Federation Trail – Acknowledgements

Geoff thanked all the supporters and sponsors for their help with this great project.

Supporters included the Victorian Government, EPA Victoria, Magistrates Court, Swift Australia, Hobsons Bay City Council, Melbourne Water and VicRoads.

Sponsors included Transpacific (1000m<sup>3</sup> of logs), Cedar Meats (sausages), Baker’s Delight (bread), and Nestle (lollies).

Special thanks also to Mayor Michael Raffoul, Hon. Wade Noonan MP, Yarraville On the Nose, Friends of Lower Kororoit Creek Inc, Altona Lions and especially the Brooklyn Community.

BRAG expects to have some money available for another BBQ to be installed in the reserve with assistance from HBCC. They still would like to find a sponsor for a roof for the BBQ site.

Jen thanked Geoff and commended the project as a great example of collaboration between community, council and industry partners.

### Questions

Question: Could the wet area be turned into a pond?

Answer: Geoff - HBCC have designed a wetland which will be planted with wetland plants, some small shrubs and just a few trees.

Q: How big are the 300 trees that OTN are planting?

A: Bruce – they are 2m trees for nature strips.

## **Item 5a. Susan Fitton, Brooklyn Industrial Precinct Strategy Committee**

Susan Fitton is the Strategic Sites Officer with Brimbank CC. Brooklyn is considered an important site for BCC. The Brooklyn Industrial Precinct Strategy Committee (BIPSC) is guiding the present planning work being undertaken by BCC.

Two new representatives have been appointed to the BIPSC. Ms Ha Le is the new community representative and she has been involved with the BCC Emerging Leaders Program. Mr David Palmer is an industry representative. They join our other community representatives, Bruce Light and Bert Boere and the industry representatives, Tom Buxton and Troy White. The next BIPSC is January 31, 2012. Approach your representatives before the meeting if you have any comments or input you want raised.

The Media Release for these appointments is available on the [Brimbank CC website](#).

Stage 1 of the Brooklyn Strategy is now complete and available at <http://www.brooklynip.com.au/councils/brimbank-city-council/>.

The Scope for Stage 2 is currently being circulated to consultants for tender. A major part of Stage 2 will involve community engagement and if anyone has any ideas on how that may take place that we can discuss with the consultants please let me know.

Susan presented a Fact sheet that has been developed to provide information on the planning regulations for Industrial Zone 1. These regulations are common for Industrial Zone 1 all around Victoria and have been around for a long time. This Fact sheet is available at <http://www.brooklynip.com.au/councils/brimbank-city-council/>.

The Brooklyn Industrial Area brochure October, 2011 edition is now available. It aims to update everyone on the Brooklyn strategic work. It is available at <http://www.brooklynip.com.au/councils/brimbank-city-council/>.

### **Question: What importance does the role of potential rezoning play in overall Brooklyn strategy?**

Answer: To get any rezoning to the Minister we need to build up a case for the changes and we hope that Stage 2 of the strategy will do this. We first need to go through this process and gather input from the community. The Department of Planning and Community Development is involved in the Strategy Committee and provides one representative to have input to the Committee.

### **Q: At the last BCRG meeting, participants were asked to provide feedback to Stage 1. Were these used for background information and not for decisions to be made?**

A: That's correct – no decisions have been made. The comments helped set the scene for what might go into Stage 2.

### **Q: Is the Meinhardt report available?**

A: Yes, the Stage 1 report is available at <http://www.brooklynip.com.au/councils/brimbank-city-council/>.

Meredith Sussex, Administrator, BCC, and BIPSC Chair explained that she had been unable to attend the BCRG forums this year due to the change of meeting dates but that the BIPSC was well represented by the community and industry representatives. BIPSC wants to hear what the community has to say and it is not too late for comments.

**Q: Wade Noonan commented on a reference in the brochure regarding the Stage 2 strategy being used to look at future policy and that it will be used to lobby State Government as part of the new Metropolitan Strategy. This is a significant step. Could you explain how/why the BIPSC would be doing this?**

A: By having Brooklyn identified in the Metropolitan Strategy it will place Brooklyn on the map from a planning perspective and that this will highlight its importance from a metropolitan point of view. This is a positive step forward for Brooklyn.

**Item 5b. Carmen Largaiolli \_ Discussion: What is the capacity to effect change now in order to shape the future of the Brooklyn industrial Precinct?**

Jen introduced Carmen Largaiolli, a local resident, to lead this conversation. It is an important part of the work that BIPSC will do and it will be useful for the BIPSC representatives in the room to hear what the community have to say on this important topic. Jen then invited others to come forward, take a seat and take part in the conversation.

**Carmen** explained that while the focus of BIPSC is long term her concern is focussed on the short term. This issue was spurred by the number of land that has come up for sale in recent months and in particular the large blocks of 28 Jones Rd and the Powercor site (20 Ha) cnr Geelong and McDonald's Rd. What can be achieved in relation to this through the BCRG?

Carmen then read an extract from Brimbank CC Cultural Heritage Study for 'Ralph's Meatworks' 690 Geelong Rd, Brooklyn. Current occupants are Brooklyn Meats & Australian Tallow Producers. This particular heritage place chosen as an example as it offers an insight into the birth of manufacturing in Brooklyn.

*"J.H. Ralph was established around 1924 to take advantage of the expanding meat export trade. The works was issued a noxious trades licence by the Braybrook Council at their meeting of 14 July 1924. This was at a time of considerable in-fighting in council over the expansion of noxious trades in the area. The shire president, Cr. George Pennell, operated a major factory in Braybrook for the manufacture of fertiliser, meat and bone meal, while another councillor, Cr. W. Pridham, had a meat by-products factory also in Braybrook. Others on the council, including Councillors Dobson and McKay, were running a campaign against further noxious licences and cited the vested interests of councillors, bringing the chamber into uproar. In 1925 Derrimut was chosen as the site for the proposed removal of the cattle sale yards at Newmarket, possibly influencing the decision of Ralphs to expand their operations. (McGoldrick, pp. 70-71). In 1947, J.H. Ralph's meatworks were treating 4,000 pigs each week for export and local requirements."*

Carmen then went on to read from her own notes.

*"Here we are today living with the legacy of that decision almost 100 years later. Abattoirs & meat processing businesses still operate in the area and continue to contribute to extensive pollution which is well known and documented in the Brooklyn area. By today's standards there are many industries that are out of place here, and there is very little confidence in the decision making process of the past, which generally has not been in the best interest of the community or the environment.*

*Businesses apply for permits/licences and begin operating in this precinct, and there is copious evidence to show that breaching of permits & licences has been rampant over many years. In addition, It has been determined that some businesses commenced operating illegally without permits or licences, and polluted the environment, with total indifference to their social responsibility.*

*What is more astounding is the fact that an industry such as an abattoir is still able to commence operations under the current zoning in Brooklyn Industrial Precinct (Industrial 1) and the decision to issue a permit, if one is required, may very well come down to the mere discretion of council officers."*

**Stuart Menzies, BCC** – Council officers take particular interest in planning applications from the Brooklyn area and many of these are dealt with in Council Chambers and not just through one officer. Particularly in the past 2 years and in regard to existing rights uses, a mix of several officers and the chamber are used to make decisions.

**Carmen** continued to read from her notes.

*“In some cases existing use rights trumps the buffer zone requirement. For example - 690 Geelong Rd essentially does not have a buffer between it and the residential area.*

*This is a question for both BCC and EPA. In light of the impending sale of the large allotment of land at the corner of Geelong and McDonald Rds Brooklyn, and the constraints of the current BCC planning scheme (not suited to 21st century reality) how will both authorities protect environmental and community interests without compromise in ensuring that inappropriate industry does not establish roots at this site, or any other site within the precinct? What is the capacity to effect change NOW in order to help shape the future of BIP?”*

**Brian Long** – Would you put abattoirs in same category as Methyl Bromide spraying?

**Carmen** – Yes. I just used this example because of its heritage overlay and it gave an insight of the social and cultural history of that site re noxious odours in 1924 and how it is still happening today.

**Lowen Clark** - Thank you for the history. Perhaps the Council should try to rezone that block now. We'd like to see it rezoned and turned into parks and would like to see Council working towards this instead of more industry.

**Carmen** - Interested to know how many existing rights permits exist or if they have expired. If their existing rights use ceases for 2 years running then the operator loses the right to use it and the permit expires. How can we use this to ensure we get the right people taking up the land and prevent noxious industries coming in?

**Lowen** – As part of a literary festival next year I intend to bring a group to read TS Elliott's *The Wasteland* in Bunting St. I would like to see industrial wastelands changed into something good for the community.

**Marie Long** – We are saying that the Council should rezone these areas and to make changes that improve the area for all of us. Can they do this? Do they have the power to make these changes when it is being sold and influence who it is sold to?

**Stuart** – Existing use rights are associated with the land, not an owner. A new owner can continue a past activity as long as it is in accordance with the original permit (that may have been obtained some years ago). If they cease to operate for 2 years or change their use then they cease to have that right. There are many sites in Brooklyn operating under historic permits which were established some time ago and we can only enforce breaches.

Rezoning issues are dealt with by Council which is a planning authority, responsible for planning issues for the whole of the municipality. It does this through the planning scheme and different zones that are appropriate in different areas. Council can begin a process to make changes to a zone in consultation with landowners and in line with planning policies and there needs to be a Council resolution to make these changes. There has to be public consultation and Council approval before it can be taken to the Minister. Susan Fitton's work with the Brooklyn Strategy and the Stage 2 work is to provide the strategic work to justify consideration of future planning decisions and possible changes to the planning scheme. Council is sometimes approached to make changes to the planning scheme.



**Lowen**- HBCC have occasionally rezoned obsolete industrial areas and you can encourage landowners to apply, which can be set into a forward vision quite easily.

**Stuart** – The setting of zones in the planning scheme are generally the last part of planning considerations. First it has to be decided what is the ‘idea’ for the development of the area before the future decisions can be considered e.g. is it to provide employment, amenity or residential uses. Stage 1 of the Brooklyn Strategy considers the importance of employment, amenity etc.

**Lowen** – Residents need to lobby for rezoning and try to get industries to support the idea as well as Council.

**Stuart** - Through Stage 2 of the strategy, BCC will be inviting input through the community engagement processes.

**Richard Marks** –With regard to how to protect the community through change of ownership and land use it is up to BCC under the Planning Scheme to address this. However during the application process there are some triggers where the EPA is involved such as when licences are required to operate. We can also look at any scheduled activities where community have rights to object. The Planning Act can also trigger EPA involvement where buffers are required. The EPA and BCC now have a Memorandum of Understanding and a close working relationship and we can deal with these issues together.

No new activities will be the same as the old systems were. The controls are there now so that new operations must be modern and without impact on the community. The laws are robust, fair and predictable. Future development will be closely looked at by BCC and EPA. We hope that provides some reassurance for the community.

**Stuart** – The Powercor site that is for sale has been cleared so that there are now only 3 out of the 24 remaining on the site and all the illegal users have been removed. The remaining users have permits. With the land on the market, potential buyers are making enquiries to Council and Susan and Stuart from BCC will be involved in these discussions. We will explain the new rigor that both authorities will be taking in the future so that potential buyers are fully aware.

**Susan Fitton** – for BCC existing rights remain with the land parcel whereas for the EPA, licences are issued to the landowner.

**Brian Long** – How did Slidecross get to be in the precinct acting illegally and they are still there?

**Carey** – BCC sought legal advice in regard to Slidecross and we advised that their use was consistent with planning scheme and the Methyl Bromide Code of Practice through EPA. There was an extensive process to ensure they complied. Department of Primary Industries were also involved. Methyl Bromide spray is a common technique used for vegetables for human consumption.

**Meredith Sussex** – MeBr is banned in some countries because it is a greenhouse gas not as a health risk.

**Richard** – The EPA investigated issuing a Pollution Abatement Notice and modelled a worst case scenario but there were no health impacts so there was no more that could be done.

Jen thanked Carmen and all who had contributed to the conversation and encouraged other participants to bring matters to the BCRG agenda.

**Item 6. Alex Kozeniaskas, Project Engineering Manager, Delta Recycling**



**Somerville Road Recycling Facility Environmental Initiatives**

Alex presented the group with an overview of Delta Recycling's business. Alex has been with Delta for 18 months and has been coming to the BCRG forums since then. This presentation shows some of the work they have done to improve the business and which has been influenced by the BCRG and in particular the good work of the EPA.

**Slide 2**

Delta Pty Ltd began trading as Delta Demolition in 1978 and since then has progressively expanded its service capabilities to now include:

- Demolition
- Civil construction and earthworks
- Bulk excavation , site retention & foundation works
- Site remediation including asbestos
- Landscaping
- Recycling including concrete, brick, rock, steel, timber and processing of non-recyclables
- Heavy equipment rental



Delta has operations in all major cities throughout Australia.

**Slide 3**

**Delta Recycling - 473-477 Somerville Road**

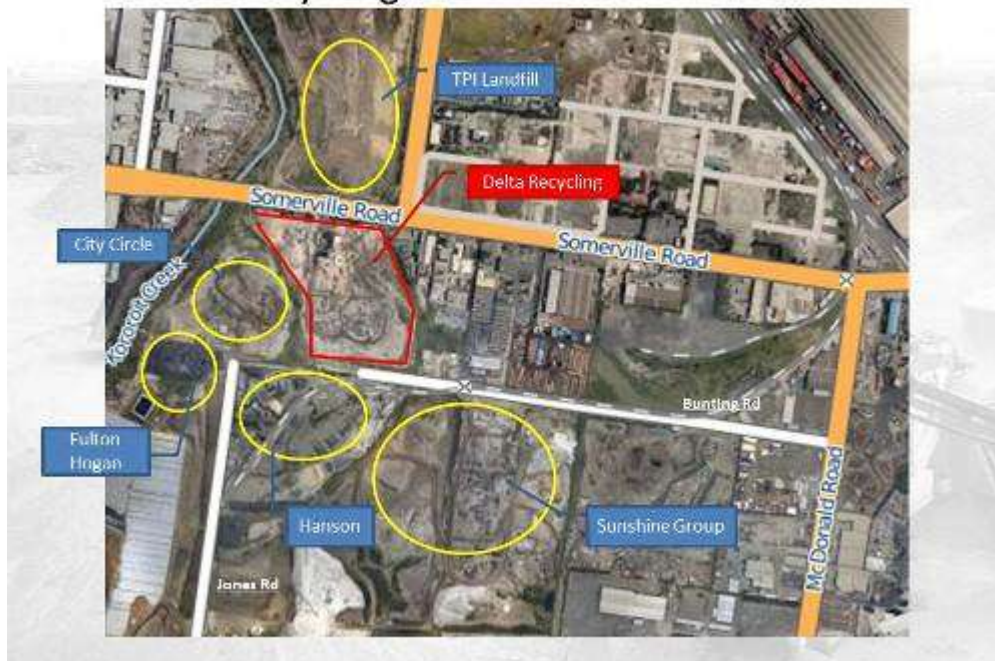


Fig 6 Slide 3

Access to the site is from Somerville Rd.

#### **Slide 4 *Recycling Operations***

- Site operating since 2001
  - Operates six days a week
  - Accepting concrete, brick, asphalt and excavation rock from construction and demolition industry
  - Process 40,000t to 50,000t of material per month to VicRoads specification for use on road and construction projects
  - Approx 500,000t of material stockpiled within the site
  - Currently employs 30 people in full-time roles on the site with the majority from the western suburbs
- Recently worked on the Deer Park bypass. Stockpiles decrease when major projects are using the materials.

#### **Slide 5 *Environment & Community***

- There has been a significant cultural shift in past 2yrs within the business with an increased focus and awareness of the site's impact on the environment and surrounding area
- Management commitment to:
  - Increase efficiency & Performance
  - Continuing Investment into site to meet Community, Council & EPA requirements (\$1-\$1.5M)
  - Work with Community, Council & EPA

#### **Slide 6 *Working with EPA***

Delta has worked very closely with the EPA since 2009.

Site has been issued with 2 Pollution Abatement Notices in 2010 & 2011 which have been adhered to by dealing with:

- Dust emissions within the site
- Material taken onto Somerville Road
- Stockpile management

#### **Slide 7 *Dust Management Hierarchy***

1. Stop dust generation at the source
  - i. Reduce movements of material (modify operations)
  - ii. Asphalt roadways/vegetation open areas
2. Contain dust at the source
  - i. Enclose processing operations
  - ii. Wheel wash
3. Capture dust to stop emission from site
  - i. Dust suppression agent used at emissions points (CoolFog system)
  - ii. Apply dust suppression agent to loose material (Water Truck)

Delta utilises all 3 of these methods.

Slides 8 & 9

Plant Investment

Significant investing made to plant to improve performance

- Enclosing primary feed hopper (Capture dust)
- High volume pug mill bins (less material moves)
- Replaced screening unit & radial stacker (less dust)



Fig 7 Slide 8

Dust Suppression

Aim: Capture dust emissions at source (within plant)  
Plant dust suppression

- Installation of Coolfog™ high pressure spray system

Historically a dust generating location now negligible dust generated.



Fig 8 Slide 9

Slide 10

Covering the open ground has reduced soil erosion and increased the aesthetic aspect.

Landscaping

Aim: Reduce static dust emission sources

- Brick stockpile structuring and vegetation & clean up of site boundary
- Mulching and planting vegetation on uncovered surfaces around site entry/exit



Fig 9 Slide 10

Slide 11

Wheel Wash & Roadways

Aim: Reduce dust within site & on Somerville Road

- Installation of wheel wash
- Asphaltting entry/exit area (approx 200m<sup>2</sup>)



This was a significant investment. It is now a lot safer on site. The wheel wash stops mud tracking onto Somerville Rd and also it is aesthetically better.

Fig 10 Slide 11

## Slide 12 *Ongoing Management Activities*

### Site

- Street Sweeper: operating every 2<sup>nd</sup> day
- Bob Cat Sweeper: operating daily
- Water Truck: full-time operation during spring & summer
- Modify/stop operations: following EPA & site observations

### General

- EPA & Council Monitoring
- Community consultation & site visits

THANK YOU.

### **Item 7. Alan Bloomfield, Manager Recycling, City Circle Recycling Pty Ltd**

Alan gave a presentation of City Circle's operations in Jones Rd, Brooklyn, where they have been for 10 years. Alan was brought into the business earlier this year partly in response to a Pollution Abatement Notice from the EPA and his role is to reduce the environmental impact of the operations.



### **Slide 2 *City Circle site***



Fig 12 Slide 2

City Circle is at the top of Jones Rd and borders Kororoit Creek. They are working with Brimbank City Council on the final specifications of the site bunding. The floor of the site is actually 6m above Jones Rd.

**Slide 3 Jones Rd, Brooklyn**

Jones Rd is a priority because every time it rains, up to a metre of water accumulates and when it disperses it leaves mud which dries out becomes a dust bowl. BCC have advised that are soon to put in a below-ground storm water drain which should alleviate the problem. It is a sealed road but this doesn't help in this situation.



and they

Fig 13 Slide 3 Water on Jones Rd

**Slide 4 Overview**

- City Circle's Recycling site in Jones Rd Brooklyn is used to process Construction & Demolition (C&D) waste.
- C&D waste includes steel reinforced and unreinforced concrete, rock, brick and asphalt from registered demolition sites throughout Melbourne. Permit also covers recycling of demolition waste timber.
- Incoming loads are inspected by trained personnel upon entry and again as each load is tipped.
- Hazardous materials are not accepted. An incoming load containing hazardous material is immediately rejected and removed off-site.
- End product is utilized in a range of civil engineering applications such as road construction, footpaths, hardstands, car-parks, etc., as a replacement for natural quarry products.

**Slide 5**

**C&D Waste**

**CITYCIRCLE**

**WE ACCEPT:** CLEAN CONCRETE NO CHARGE  
CLEAN ROCK (1000 TO 10000MM) NO CHARGE  
CLEAN BRICK/RUBBLE/MIXED LOADS CHARGES APPLY

**WE DO NOT ACCEPT:** ASBESTOS, MATERIAL CONTAINING ASBESTOS, PRIVATE CARS OR TRAILERS, DOMESTIC WASTE, CONTAMINATED WASTE, TIRE TUBES AND LIQUID WASTES.

**WE SELL:** RECYCLED CRUSHED CONCRETE AND BRICK PRODUCTS

**HOURS OF OPERATION:** 8:00AM - 5:00PM  
MON - FRI

**WASTE ENQUIRIES:** 0300-000000 **EMERGENCY CONTACT:** 0400-000000

Fig 14 Slide 5

**Slide 6 C&D Waste Recycling**

- Reception, inspection, sorting, preparation and stockpiling waste feedstock
- Crushing and screening the feedstock to produce recycled concrete products
- Classification and distribution of finished products to civil construction sites in Melbourne Metro area
- Implementation of Site Specific OHS and Environmental Management Policies.

Slide 7

**Site Operations**

**Mobile Plant:**

Excavators, wheel loaders and ancillary equipment.

**Concrete Crushing Plant:**

Primary jaw crusher, secondary impact crusher, electromagnets and screening equipment.

**Stabilization Plant:**

300 T/Hr pugmill.



Fig 15 Slide 7

**Slide 8 Environmental Management**

- Site operates within scope and conditions of a **Site Environmental Management Plan (SEMP)**
- SEMP is designed to protect health and wellbeing of workforce, public and amenity of surrounding neighbourhood.
- SEMP promotes efficient operation of all site based activities and ensures effective environmental management is implemented, maintained and enforced.
- Ensures effective dust and noise suppression procedures are in place and implemented at each stage of the recycling process.
- Involves environmental maintenance of internal and external roads, stockpiles and hardstands.
- Ensures mud and surface debris is not tracked onto public access roads in the vicinity of the site.

Slide 9

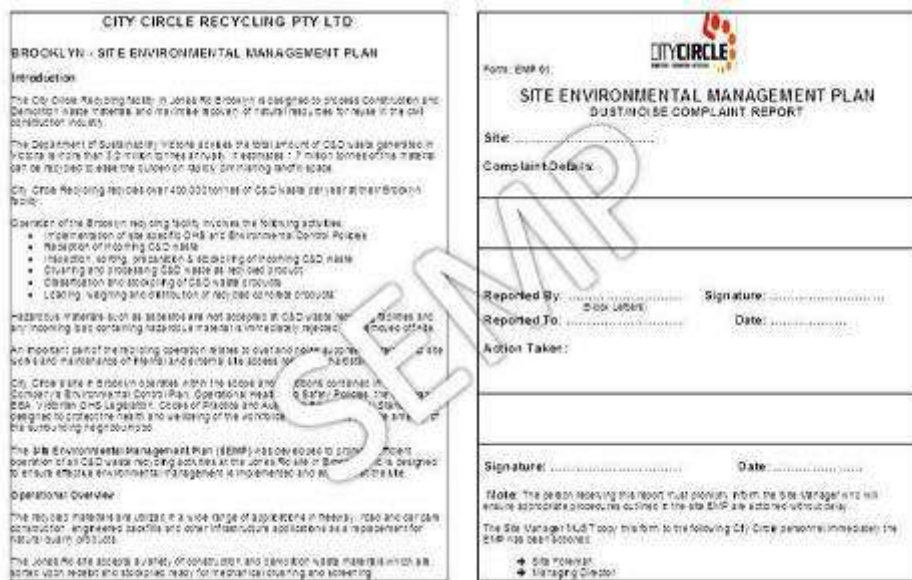


Fig 16 Slide 9 Example of a SEMP

All complaints are fully documented and are an integral part of the employee induction process. Any complaints are recorded and dealt with at the fortnightly staff meetings.

### Slide 10..Dust & Noise Mitigation - Site Bunding



Fig 17 Slide 10 Kororoit Creek boundary

- Kororoit Creek boundary (bund 2m above max stockpile height).
- Partly mulched ready for planting with native foliage.
- Stockpile heights max 12m above site floor, which is 6m above Jones Rd.

### Slide 11 Dust & Noise Suppression – Internal Roads, Hardstands & Stockpiles

Finalising an incoming load dousing system. Advance notice from the EPA triggers an overnight saturation process.  
Can also use biodegradable binding products.



Fig 18 Slide 11 Dust suppression

### Slide 12 Dust & Noise Suppression – Crushing Plant



Fig 19 Slide 12

- Conveyor transfer areas fitted with dust suppression sprays
- Product specification normally requires 10-12 % moisture content. i.e. approx. 100 Litres water /Tonne of product – enhances dust suppression.



**Slide 13 Dust & Noise Suppression – End-Product Handling**



Fig 20 Slide 13

**Slide 14 Dust & Noise Suppression – Internal/External Roads**



- *Continuous surface saturation by mobile water tanker*



- *Tyre deformation grid and high pressure wheel wash at Exit.*

Fig 21 Slide 14

THANK YOU.

## **Item 8. Malcolm Ramsay, Hobsons Bay City Council, Francis St and Cemetery Rd Update**

Jen introduced Malcolm and noted that the issue of Francis St was first tabled at BCRG on the 3rd December, 2008 and has been an ongoing issue with VicRoads and HBCC.

The Fact sheet - Francis Street and Cemetery Road, Brooklyn is available in **Attachment 2**.

Francis St - VicRoads have installed some strand wire fencing which has resolved some issues but it does not extend to the train line. Also sheeting has been installed beside the road to provide dust suppression. Behind the wire fencing is Council's responsibility. Budget and options currently being investigated include spraying sealant.

Cemetery Rd – the current zoning is creating difficulties as it is classed as an arterial road but not a 'declared' arterial road which would mean the maintenance was VicRoads' responsibility. VicRoads have planning rights over the road. One side is the responsibility of Maribyrnong CC and the other is HBCC. HBCC has been trying to fill the pot holes but the traffic and trucks continue to create damage. It would be better if the road was remade but this could cost between \$750,000 – \$1M.

There is an old MMBW drain down the side of Francis St so in theory the area could be drained. The HBCC Director of Engineering has said that any work needs to go into the budget consideration process, which is already fixed for next year.

Malcolm suggested that if residents see this as a big issue, that they need to lobby Council to get it considered a higher priority than it is currently.

## **Item 9. Richard Marks, Manager Pollution Response, EPA Victoria - Update on dust, noise and odour program**

Richard's presentation gave an overview of the work EPA has achieved over the past and in particular how these have measured up against targets.

### **Slide 2 Current Pollution Reduction Targets**

- 10/11
  - 25% reduction in odour reports – achieved
  - 50% reduction in dust exceedences - achieved
- 11/12
  - Reduction in odour reports by 50% on 10/11 Year (706 reports down to no more than 353 reports).
- Dust

Reduction in dust exceedences by 50 % on 10/11 year (limit exceedence to 10 or fewer). These targets are considered ambitious but are still twice the standard for these reports.

**Slide 3 Offensive Odours – Results**



Fig 22 Slide 3

The results this year are currently above the target and EPA is confident targets will be met as further controls come on line at Australian Tallow and Cargill. EPA officers are targeting premises on priority basis. Further emphasis to be placed on manure odour reports, chemical smells and burnt smells periodically reported. Tracing some of these sources has been difficult. These results are reliant on people making reports and the EPA is aware of 'reporter fatigue'.

**Slide 4 Dust - Monthly PM<sub>10</sub> data for Brooklyn**

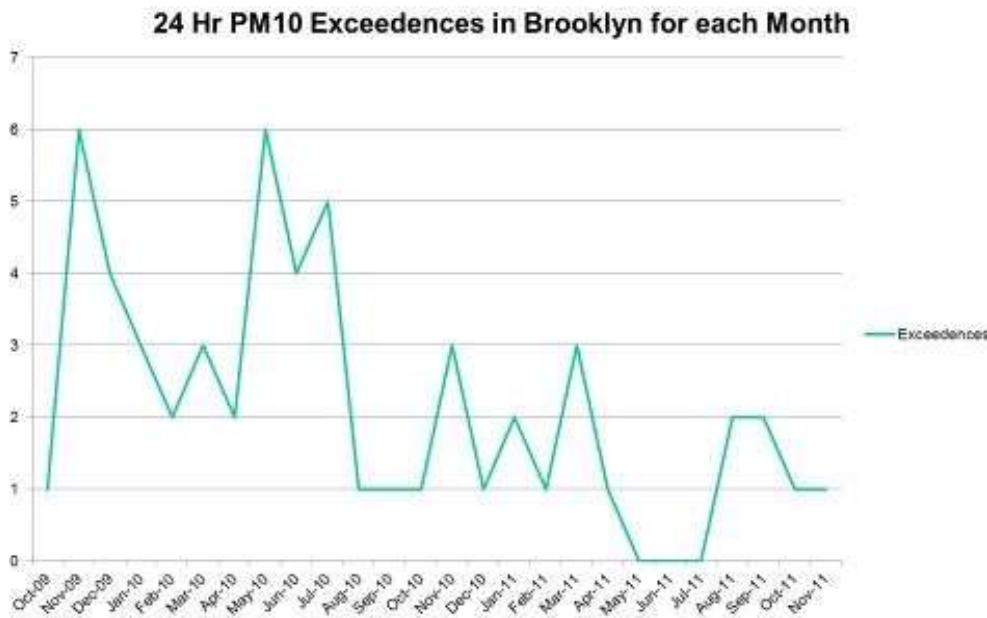


Fig 23 Slide 4

The standard threshold for dust is 50µg of 10 micron particles or less (PM<sub>10</sub>) measured over a 24 hour period and that we exceed that no more than 5 times per year. Large dust particles, PM<sub>10</sub> exceedences per month have dropped, due to weather and actions implemented by industries. We are not currently on target for 10 or less exceedences this year. EPA has conducted analysis and will take additional action to target roads and industries found to be non-compliant.

### Slide 5 Offensive odours & EPA actions

- Australian Tallow Producers (ATP)
  - PAN requires significant investment in infrastructure and controls.
  - Works are now being installed, further improvements expected in the coming weeks.
  - All engineering works required by 29 June 2012.
- Cargill
  - currently progressing through enforceable undertaking.
  - Further assessment of biofilter in train.
- JBS Australian (Swift)
  - issued 2 PANs, 1 to fix biofilter and 1 to undertake works to ensure no odours escape the Wastewater Treatment Plant.

ATP working through PAN conditions. Main building is now under negative pressure, however ATP is undertaking further works to enhance and increase negative pressure inside the building. There has been a slight delay in having one set of tanks enclosed due to permitting requirements. This has resulted in a 6 week delay and EPA has extended the compliance date from 10 January to 29 February.

### Slide 6 Enforcement actions

- Australian Tallow in Court and fined \$50,000, plus costs of almost \$14,000, as a result of two air pollution events and a licence breach.
- EPA investigating further incidents regarding odour and dust and will continue to take enforcement action on additional sites identified as non-compliant.
- Previous fines for dust from TPI and Tasman Logistics have been upheld after requests for internal review.

The ATP fine was not able to be moved into the Inspiring Environmental Solutions (community grants initiative) in this case.

### Slides 7 & 8



Fig 24 Slides 7 & 8 Improvements to ducting at ATP, ducting pipes.

### Slide 9 Particles (Dust) – Update

- Blitz conducted of 13 sites in late September with Hobsons Bay, Maribyrnong, Brimbank Councils
- Assistance from VicRoads (road cleaning) near high risk sites.
- No non compliances found during inspection.
- EPA considering the revocation of some notices.
- Recent inspections have identified further sites that are presenting risks, notices to be issued.

The blitz kept pressure and it was good to see a high level of compliance for these unannounced visits. EPA is considering revoking some notices on the provision that if further noncompliances occur, enforcement action, including notices requiring engineering solutions, may be issued.

### **Slide 10 Enforcement actions**

- Fines issued to TPI and Tasman Logistics for dust emissions have been upheld after requests for internal review.
- EPA investigating further incidents regarding dust.

### **Lyn Denison, Principal Scientist, Environmental Strategies, EPA**

#### **Slides 11 & 12 Dust Component Analysis**

This work is looking at what is actually in the dust component and if there is anything that may impact on health. Generally the results show no harmful particles except for Chlorine which is most likely from the sea but other potential sources are being sought.

- Chloride average for 12 months is slightly above long term recommended health standards. Brooklyn reading is 1541ng/m<sup>3</sup>
- Footscray 1351 ng/m<sup>3</sup>
- Standard 1,500 ng/m<sup>3</sup>
- Note Mercury well below levels of concern.
- Analysis shows that on average 28% of dust is sourced from soil.
- On hot and windy days dust from soil increases up to 64%.
- This data allows us to target further efforts to reduce PM<sub>10</sub>.

For Compositional Data see **Attachment 3**.

#### **Slide 13 Next Steps with Compositional Results**

- EPA has sent samples for fingerprinting with aim of being able to narrow down industries to be targeted for further investigation.
- EPA to investigate industries that may be causing salt emissions (chloride).
- Target roads to help remove soil component of PM<sub>10</sub>.

### **Richard Marks**

#### **Slide 14 West Sunshine Monitoring**

- EPA has completed the program with the West Sunshine Monitoring Station.
- Results have shown that there are no major sources of dust impacting from the north of the Brooklyn Estate
- There is no significant difference in results between Footscray and West Sunshine, hence West Sunshine monitoring to be discontinued.
- We are now focused on further analysis of component samples.

Major sources are within the Brooklyn area, including from industry. This monitoring is very expensive and is no longer necessary. The money saved is being used for extra analysis in the fingerprinting program.

#### **Slide 15 Further Work**

- EPA to keep targeting industry for dust and odour.
- Dust work moving into the next phase, we are currently fingerprinting component analysis to try and trace PM<sub>10</sub> to sources.
- Targeting roads and road verges which are a source and a vector.
- 12 exceedences so far 2011, if we reduced PM<sub>10</sub> by 15% there would only be 3 so far.

The task to reduce exceedences is not mammoth; there are lots of innovative things that can be done.

#### **Slide 16 Summary of Activities Underway**

- EPA sends officers out on all days predicted to cause dust exceedences. They have undertaken periodic odour surveillance and are considering further surveillance on suspected sources.
- Dust modeling of emissions from Jones and Bunting Roads almost complete.
- EPA has major concerns about dust on roads, as a source and transport corridor for dust, they will be targeted.

**Slide 17 Roads**

- EPA has considered the contribution of roads to the PM<sub>10</sub> issue in the area.
- Significant gains are possible, through road cleaning, maintenance and upgrades. EPA is expecting additional support to address roads issues.
- Areas of interest to achieve gains are: Jones and Bunting Roads, Cemetery Road and Verge (Hobsons Bay side), Somerville Road and verges on Somerville Road, McDonald Road, Old Geelong Road, Francis Street and Paramount Road.

**Slides 18 – 22**



Fig 25 Slides 18 & 19 Cemetery Rd



Fig 26 Slides 20 & 21 Francis St, dust visible



Jones Rd inundated with water



Fig 26 Slide 22 Somerville Rd, lacking vegetation on verges

### **Slide 23 Survey Work – Outcomes Research**

- EPA appreciates the community's persistence in reporting pollution so that officers can act.
- EPA is conducting survey work, with in depth interviews in our hotspots of Brooklyn and Dandenong. Measuring over number of years.

This survey will help to find out how people feel about their environment and the work we do.

### **Slide 24 Inspiring Environmental Solutions**

Over the past 11 years that EPA has been able to prosecute companies in this way:

- More than \$3.5 million has been directed to benefit impacted communities
- 69 prosecutions to more than 80 community environment projects
- Greening Federation Trail, Brooklyn is a recent project delivered by BRAG from the Swift Australia prosecution

The EPA newsletter highlighting eleven years of achievements through their Inspiring Environmental Solutions program is available from the [EPA website](#).

### **Item 10. Panel Discussion and Questions** (relevant presentations can be seen at Items 6,7,8 & 9)

#### **Panel members:**

- EPA - Richard Marks
- Brimbank CC - Carey Patterson
- Maribyrnong CC – Foti Beratis
- Hobsons Bay CC – Malcolm Ramsay
- Delta Recycling – Alex Kozeniauskas
- City Circle Recycling – Alan Bloomfield

#### **Question 1 – for Alan Bloomfield (City Circle)**

**You say your aim is to reduce your dust. The community wants the dust stopped not just reduced. What do you think about the image of your stockpiles and how it looks to the community particularly when approaching from Jones Rd? What are your plans for the future?**

#### **Response – Alan Bloomfield**

City Circle is working on the bunding to screen the site entirely from view. Works have been on hold for 18 months as we wait for negotiations with Brimbank CC and the EPA. We have a letter from BCC stating that we can be sued if we proceed with the bunding works before final approval. As for the appearance from Jones Rd – our entrance is at the very end of Jones Rd which has been landscaped on the left hand side. We must leave the right hand side to allow for the new underground water drainage which will be about 50m of our frontage along Bunting Rd. Our aim is to stop dust which means reducing it over time. We have taken many measures to achieve this including stopping production at 8am in the morning on days of high dust potential. As for our future – we intend to stay on the site.

**Carey Patterson** – With regard to the bunding, there are still more discussions needed to decide on the final height, what will be planted there and what is needed to stabilise the stockpiles.

**Action 2:** Carey to follow up and report any progress on these issues.

#### **Question 2 – for Alan Bloomfield (City Circle)**

**What are the plans for landscaping along Kororoit Creek? Is anyone talking to Melbourne Water about their plans for the creek including their green programs?**

#### **Response – Alan Bloomfield**

We are working with BCC and are bound by what we are told to do and are ready to do whatever needs to be done.

**Carey Patterson** – BCC have a landscape architect looking at several creeks in the area including Kororoit Creek and would assume that they would be consulting with Melb Water.

**Action 3:** Carey to follow up whether Melb Water is being consulted.

**Comment:**

The current alignment for Westlink runs through City Circle which may impact on the future plans.

**Question 3 – Alan Bloomfield (City Circle)**

**Where is the proposed drainage going to be?**

**Response – Alan Bloomfield**

The drains will go along Jones Rd, across the entrance to City Circle and then along the left hand side of Bunting Rd.

**Carey Patterson** - BCC has committed \$250,000 for plans for the new drainage in Jones Rd which will be implemented in next half of the financial year. This should hopefully alleviate this issue.

**Question 4 – for Alex Kozeniauskas (Delta Recycling)**

**What processes do you have in place to deal with potential dust after hours if workers can't be there to dampen the site?**

**Response – Alex Kozeniauskas**

There are no automated systems in place but we do have sprinklers on site. Many of our supervisors live close by and are on call so that if need be they can come in to turn the sprinklers on.

**Question 5 – for Malcolm Ramsay (Hobsons Bay CC)**

**Why wasn't kerbing channel put on both sides along Francis St instead of the wire and the grassy patches which don't look very well designed?**

**Response – Malcolm Ramsay**

The road surfaces and the first 3m on the edges are maintained by VicRoads.

**Question 6 – for Malcolm Ramsay (Hobsons Bay CC)**

**Why not install kerbing channel on both sides to stop the trucks parking illegally? At present they still park where there is no wire.**

**Response – Malcolm Ramsay**

There is still a short length not wired near the train track. This is VicRoads' responsibility.

**Question 7 – for Malcolm Ramsay (Hobsons Bay CC)**

**What is your opinion of the works on Francis St where \$180M of VicRoads money was spent and it looks worse now. Are you asking the community to wait to 2025 for the government to resolve the issue of the classification of this road particularly in regarding the Westlink proposal?**

**Response – Malcolm Ramsay**

Malcolm declined to respond. Jen indicated that it was not Malcolm's place to comment on issues related to VicRoads.



**Question 8 – for Malcolm Ramsay (Hobsons Bay CC)**

**Why can't someone of a more senior position within HBCC come to this forum to answer these questions and to see the frustrations of the community? The community wants the CEO of HBCC to come to this forum.**

**Response – Jen Lilburn**

Jen indicated that she had made this request for a senior representative to come along as the Mayor was unable to attend tonight. She noted that Cr Raffoul attends the majority of BCRG meetings, and added that it would be preferable if a senior staff representative attended also.

**Question 9 – for Malcolm Ramsay (Hobsons Bay CC)**

**Cemetery Rd and Francis St are supposed to be on the 5 year plan but nothing is happening. They seem to stay on the bottom of the plan forever.**

**Response – Malcolm Ramsay**

Yes, apparently they are on the plan but no funds have been allocated to them.

**Comment – for Malcolm Ramsay (Hobsons Bay CC)**

Why doesn't anyone from HBCC with authority come to these forums when the other councils show up? Why isn't the CEO here? I live on an industrial service road on Geelong Rd which is falling apart. This was originally a rural road and now it has all sorts of trucks using it and it can't handle this traffic. I have been complaining about these issues for over 15 years. 10 years ago I was told by an Engineer that it was on an 8 year plan!! We are still waiting for action.

**Comment – for Malcolm Ramsay (Hobsons Bay CC)**

You say that the community should be campaigning to council for improvements. Isn't that what we are doing this through the BCRG forum. This has been on the agenda for quite some time.

**Action 4:** Malcolm to take these comments back to council for a response.

**Comment – for Alan Bloomfield (City Circle) and Alex Kozeniauskas (Delta Recycling)**

Thank you to both Alan and Alex for making your presentations tonight and for taking the dust and health issues seriously and for the work you are putting in to make improvements.

**Question 10 – for Richard Marks (EPA)**

**Why are there no incidences of dust in the Sunshine area?**

**Response – Richard Marks**

As the worst incidences are due to hot northerly winds and not southerly winds, the dust doesn't go towards Sunshine. There have been no exceedences on the weekends and any exceedences reported are from the morning until around 4pm leading us to conclude that vehicle movement is a major contributor to dust.

**Question 11 – for Richard Marks (EPA)**

**There is still a lot of industrial noise occurring particularly at night and all day on some Sundays, such as the breaking of car bodies. We look forward to some quiet on the weekends and a break from the traffic noise during the week. What is being done about this?**

**Response – Richard Marks**

There are still many issues in the area which need to be addressed and we are working on them in order of priority.

**Comment** - The noise may be lower down on the EPA's priorities but we have been reporting this to EPA for some time.

**Question 12 – for Richard Marks (EPA)**

**How do you scientifically calibrate the nose for the odour monitoring?**

**Response – Richard Marks**

2 tubes are used. One has a substance diluted in it and the other doesn't. The tube with the substance is continually diluted until the odour can't be smelt any more. This process is repeated at least once a year. It is a highly consistent method and there is no scientific instrument better than the human nose!!

**Question 13 – for Richard Marks (EPA)**

**If I ring up the EPA and complain about an odour while driving is it considered a reportable incident by the EPA?**

**Response – Richard Marks**

In order for the report to be used in court, it must come from a residential property and not from a public road. It is still useful intelligence.

**Question 14 – for Richard Marks (EPA)**

**If I make a report from home and then drive around to identify the source is that useful?**

**Response – Richard Marks**

The EPA needs to be able to eliminate any other potential odour source through the work of our officers. We don't want community investigating these sources for OHS issues – this is the role of trained officers.

**Question 15 – for Richard Marks (EPA)**

**If I pass a smell and I can still smell it from home and report it - is that OK?**

**Response – Richard Marks**

Yes.

Jen thanked everyone again for attending.

She asked participants to please put dots on the survey on their way out to gauge community satisfaction regarding processes to resolve odour and dust problems in the general Brooklyn area. See the results in Attachment 4.

**The meeting closed at 9.15pm.**

**Attachment 1** The following report was distributed by Carey Patterson, Brimbank City Council.

### **Brooklyn Industrial Area Update – November 2011**

#### **Summary**

The Council & the EPA have recently signed a Memorandum of Understanding (MOU) which acknowledged the joint responsibility Brimbank Council and the EPA have for the many local environmental issues within the municipality.

This agreement formalises the current arrangements that apply in the Brooklyn area of working together and undertaking joint inspections of various properties in the area to ensure progress is being made in relation to complying with the requirements of the various enforcement activities that are currently underway.

This agreement allows both agencies to work together to improve outcomes for local communities and industry as well as implementing the Council strategic initiatives for the various key sites within the municipality.

Under the MOU, EPA and Brimbank will jointly investigate and enforce complaints, collaborate on submissions and applications to VCAT, while EPA will provide technical support to help guide council in planning applications within buffer zones.

#### ***Enforcement Activity***

- Inspections have occurred at the Powercor site on the corner of Geelong and McDonald Roads. The site has been largely vacated in preparation of the pending sale of the land, the only activities still occurring relate to the storage of excavations formwork, the radio station and car yard operation.
- Inspections have also occurred at 69 Bunting Road Brooklyn in preparation of the VCAT hearing listed for February 2012.
- The One Steel site has been visited in relation to the material being stored on site and they have been advised a further inspection is being arranged to do a full compliance inspection of the property
- An application for a planning permit has been made in relation to the landfill that has occurred adjacent to the Kororoit Creek which is currently being assessed.
- We have referred a number of issues to the Planning enforcement team at Wyndham since in relation to various uses occurring on the Wyndham side of the Kororoit Creek.

#### **Update of Brimbank's Activities in Brooklyn Industrial Precinct**

In March 2010 the Council committed to supporting the BCRG in increasing its presence in the Brooklyn Industrial Precinct and working with the EPA and adjoining councils to improving the outcomes for industries and communities within and adjacent to the BIP.

As a consequence the Council commenced an enforcement program in January 2010 which has involved a total of 610 inspections undertaken within the Brooklyn Industrial Precinct to date. This has included an extensive joint enforcement program with the EPA on industries within the Brooklyn Industrial Precinct. In addition, the Council has created a number of new roles that are relevant to the Brooklyn area.

#### ***Brooklyn Road Works Update***

- The Council operations team will continue to undertake dust suppression treatments to the various road surfaces as and when required.
- The Council operations staff is continuing with investigations into drainage issues in Jones Road Brooklyn which also involves the pumping of storm water which is overflowing into Jones Road from the adjoining properties. An allocation of \$250,000 has been made in the 2011/12 budget to install a new storm water drain to Jones Road. The detailed design work for this project is now nearing completion with the works programmed for the later half of the 2011/12 financial year.
- The road sweeping program will continue on a programmed basis
- The condition of Bunting Road continues to be monitored and grading and rolling is occurring as required.
- Council is currently assessing 1 new application that has been received for works within the Brooklyn Industrial Precinct

#### ***Planning Compliance Team, November 2011***

Thursday, 24<sup>th</sup> November 2011

**What would be required to improve the condition of Cemetery Road?**

VicRoads classifies roads according to use. Cemetery Road is not an arterial road according to VicRoads guidelines and therefore maintenance responsibilities lie with Hobsons Bay City Council.

There is no quick fix to improve Cemetery Road. Maintaining it by filling pot holes haphazardly is not a long term solution for a road carrying heavy vehicles. However the Council will carry out patching works to temporarily fix the worst pot holes.

Works to improve the condition of Cemetery Road would involve installing underground drainage, kerb and channel, industrial standard road pavement, street lighting and landscaping. This would total more than \$750,000. These works would need to be considered in a future capital works program if they are to proceed. Completion of projects in the capital works program is based on priority, including maintaining the quality of roads, traffic volume and accident history.

In the meantime, the Council will inspect Cemetery Road more frequently to determine what maintenance works can be done to keep the road in better order.

**How will the issue of dust be addressed in Francis Street?**

VicRoads has sealed a portion of the road shoulder in Francis Street to limit the amount of dust in the area. Wire safety fencing has also been installed to prevent vehicles stopping along Francis Street and crossing onto the shoulder to kick up dust.

The Council has erected 'No Stopping' and time limit parking signs along Francis Street. Local Laws officers have patrolled the area on several occasions and have issued a small number of infringements. Local Laws officers will patrol these areas more frequently to further prevent trucks stopping in these areas. Regarding the time limit parking, the majority of drivers have complied with the parking limits. Some of these signs are missing and the Council will replace these. Having the time limit parking areas is vital for local businesses along Francis Street that require parking for customers.

To landscape Francis Street between the wire barrier and the fence line would cost more than \$120,000. There are no funds available for these works in the current financial year. Given the considerable cost involved, Councillors would need to approve the allocation of funds to undertake them in future capital works budgets.

A recent inspection of Francis Street identified a significant amount of loose material and grit on both shoulders of the road, which will contribute to the dust issue. The Council has raised this with VicRoads and they will speak with their contractor to conduct regular sweeps to remove the loose material.

**Further enquiries:**

Coordinator Public Health Malcolm Ramsay 9932 1000

**Attachment 3 EPA BROOKLYN COMPOSITIONAL DATA FOR BROOKLYN COMMUNITY**

POLLUTANT	LONG-TERM STANDARD (ANNUAL AVERAGE)	BROOKLYN DATA	FOOTSCRAY DATA
Benzo[a]pyrene	0.3 ng/m <sup>3</sup>	0.2 ng/m <sup>3</sup>	0.13 ng/m <sup>3</sup>
Si	3000 ng/m <sup>3</sup>	nd	nd
P	100 ng/m <sup>3</sup>	6 ng/m <sup>3</sup>	7 ng/m <sup>3</sup>
S	5,000 ng/m <sup>3</sup>	446 ng/m <sup>3</sup>	368 ng/m <sup>3</sup>
Cl	1,500 ng/m <sup>3</sup>	1541 ng/m <sup>3</sup>	1351 ng/m <sup>3</sup>
K	2,000 ng/m <sup>3</sup>	169 ng/m <sup>3</sup>	124 ng/m <sup>3</sup>
Ca	5,000 ng/m <sup>3</sup>	570 ng/m <sup>3</sup>	277 ng/m <sup>3</sup>
Tl	100 ng/m <sup>3</sup>	60 ng/m <sup>3</sup>	33 ng/m <sup>3</sup>
V	50 ng/m <sup>3</sup>	2 ng/m <sup>3</sup>	2 ng/m <sup>3</sup>
Cr	200 ng/m <sup>3</sup>	3 ng/m <sup>3</sup>	2 ng/m <sup>3</sup>
Mn	90 ng/m <sup>3</sup>	19 ng/m <sup>3</sup>	9 ng/m <sup>3</sup>
Fe	5000 ng/m <sup>3</sup>	734 ng/m <sup>3</sup>	363 ng/m <sup>3</sup>
Co	20 ng/m <sup>3</sup>	3 ng/m <sup>3</sup>	1 ng/m <sup>3</sup>
Ni	50 ng/m <sup>3</sup>	2 ng/m <sup>3</sup>	2 ng/m <sup>3</sup>
Cu	100,000 ng/m <sup>3</sup>	8 ng/m <sup>3</sup>	6 ng/m <sup>3</sup>
Zn	2,000 ng/m <sup>3</sup>	72 ng/m <sup>3</sup>	36 ng/m <sup>3</sup>
Br	700 ng/m <sup>3</sup>	7 ng/m <sup>3</sup>	6 ng/m <sup>3</sup>
Sr	2,000 ng/m <sup>3</sup>	8 ng/m <sup>3</sup>	4 ng/m <sup>3</sup>
Pb	500 ng/m <sup>3</sup>	21 ng/m <sup>3</sup>	12 ng/m <sup>3</sup>
As	3 ng/m <sup>3</sup>	0.5 ng/m <sup>3</sup>	0.4 ng/m <sup>3</sup>
Se	20,000 ng/m <sup>3</sup>	0.35 ng/m <sup>3</sup>	0.63 ng/m <sup>3</sup>
Hg	30 ng/m <sup>3</sup>	0.37 (0.07) ng/m <sup>3</sup>	0.07 ng/m <sup>3</sup>

**Attachment 4 Community satisfaction regarding processes to resolve odour and dust problems in the general Brooklyn area.**

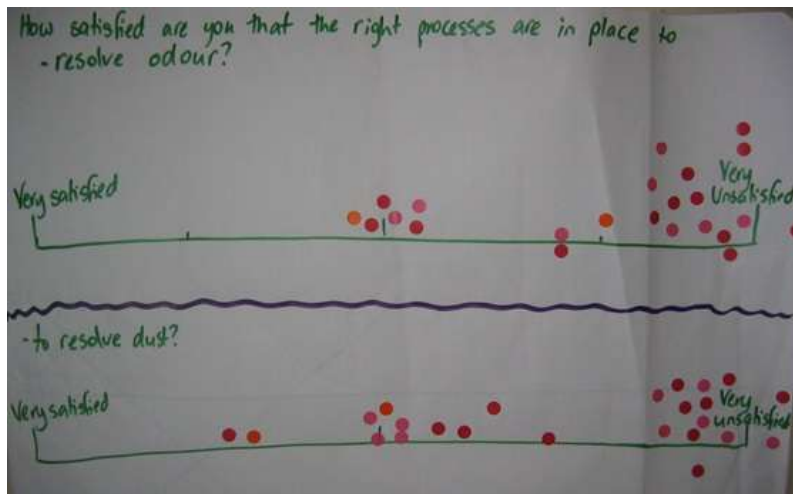


Fig 27 May 2010

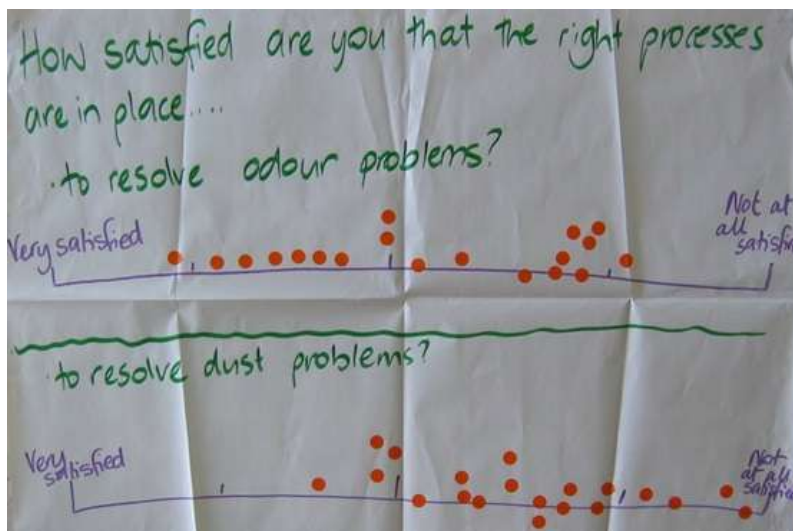


Fig 28 November 2010

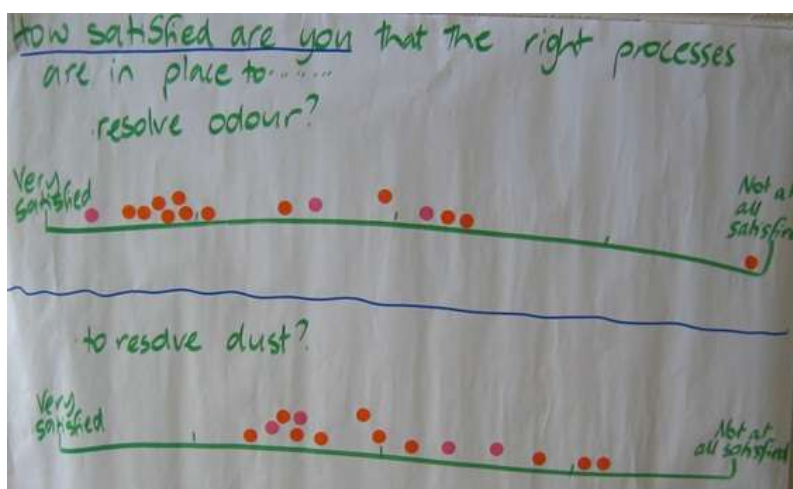


Fig 29 November 2011

## Meeting Attendance Record – 24 November, 2011

36 people registered their attendance at the desk:

Name	Organisation	Name	Organisation
Alan Bloomfield	City Circle Demolitions	John Styzinski	Brooklyn Resident
Alex Kozeniauskas	Delta Group	Laurie Bell	BRAG/Brooklyn Ratepayers
Andrea Mason	Executive Officer, BCRG	Leighton Black	Australian Tallow Producers
Annette Patrick	BRAG	Lowen Clarke	Resident
Bert Boere	BRAG	Malcolm Ramsay	Hobsons Bay City Council
Brian Long	BRAG	Marg Renwick	EPA Victoria
Bruce Light	On The Nose	Marie Long	BRAG
Carey Patterson	Brimbank City Council	Martin Hermans	Resident
Carmen Largaiolli	Community Member	Matt Ead	Veolia
Chris Webb	EPA Victoria	Matthew Fisher	JBS Australia
Clare Lombardi	City West Water	Meredith Sussex AM	Brimbank City Council
Dennis Pedretti	Australian Tallow Producers	Nadia Verga	TPI/TWM Landfills
Foti Beratis	Maribyrnong City Council	Olga Ghiri	Transpacific
Geoff Mitchelmore	Resident Altona North	Paul Ratajczyk	EPA
Hector Burton	Resident & Swift Employee	Richard Marks	EPA Victoria
Jessamy Nicholas	EPA	Stuart Menzies	Brimbank City Council
James Downs	Sita	Susan Fitton	Brimbank City Council
Jen Lilburn	BCRG Chair	Tom Buxton	Sunshine Groupe
Joe Coleiro	Cargill	Wade Noonan MP	Member for Williamstown

Apologies			
Iain Butterworth	Dept of Health	Nick Fisher	VicRoads
James Fraser	On the Nose	Stephen Sully	Brimbank City Council
Mark Globan	Sita	Tony Briffa (Cr)	Hobsons Bay City Council
Michael Raffoul (Cr)	Hobsons Bay City Council		